

FrameMaker Evaluation Version “Cannot Duplicate Document” error

External

Author: Matthew D. Wimpee

Last Modified: June 9, 2006

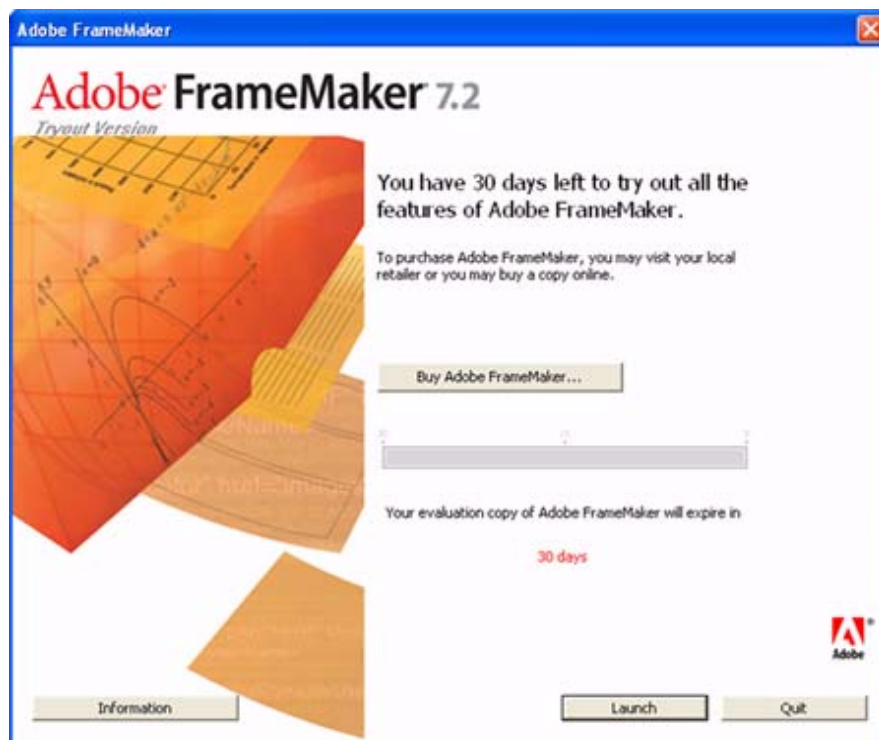
ePublisher Pro

The purpose of this article is to explain the “Cannot Duplicate Document” error for evaluators of Adobe’s FrameMaker software.

Evaluators of Adobe’s FrameMaker software will experience a “Cannot Duplicate Document” error if Adobe FrameMaker is launched programmatically by ePublisher Pro. Because Adobe Framemaker evaluation version requires the user to manually click through a dialog before launching the application, ePublisher Pro cannot run conversions, scans, and previews.

Troubleshooting Steps:

- 1) Open up the evaluation version of FrameMaker. You should see a screen similar to the one below.



Adobe FrameMaker evaluation version screen.

- 2) Click the **Launch** button on the evaluation screen.
- 3) Leaving Framemaker open, open the ePublisher Pro project.

- 4) Select **Project > Scan All Documents**.
- 5) Do one of the following:
 - Select **Project > Generate All**.
 - Select **Project > Display Preview** for any of your documents.

Cannot Duplicate Document Error

External

Author: Ryan Hammett

ePublisher Pro

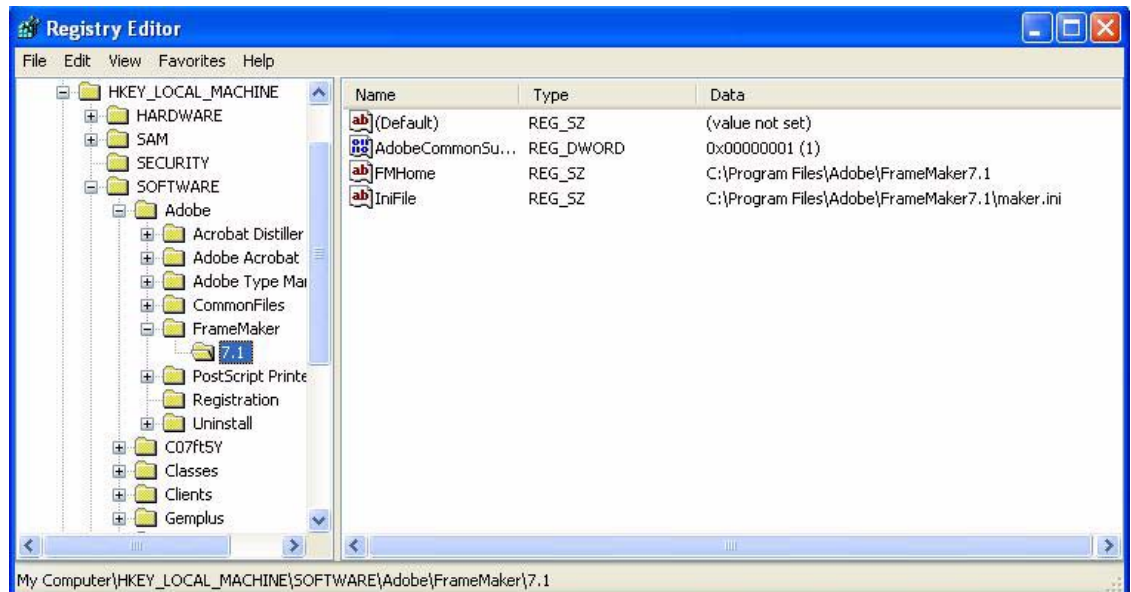
Last Modified: October 6, 2006

The purpose of this article is to explain how to troubleshoot if the message “Cannot Duplicate Document” appears in either the log file or in a error message dialogue box.

If you receive this error, there is most likely a communication problem between ePublisher and FrameMaker. Please follow the steps below to troubleshoot the issue.

- 1) Go to Start > Run.
- 2) Type `regedit` and click OK.
- 3) Navigate to HKEY_LOCAL_MACHINE > SOFTWARE > Adobe > FrameMaker > [FrameMaker Version].
- 4) Verify that both the "FMHome" and the "IniFile" entries are in the registry.

For example, if you have FrameMaker 7.1 installed, your registry should look like this:



- 5) If you do not see either of these entries, you will need to reinstall FrameMaker and ePublisher.
- 6) If you do see these entries you will need to follow the path indicated in the registry file to the maker.ini and search for the WebWorks API. Search on the string `webworks`.
- 7) You should see the following WebWorks API entry for FrameMaker:

```
WebWorksFrameClient=Standard,WebWorks Client,C:\Program  
Files\WebWorks\ePublisher  
Pro\Adapters\FramerMaker\WebWorksFrameClient[FrameMaker version].dll,all
```

For example, if you have FrameMaker 7.0 installed, your maker.ini should have the following:

```
WebWorksFrameClient=Standard,WebWorks Client,C:\Program  
Files\WebWorks\ePublisher  
Pro\Adapters\FramerMaker\WebWorksFrameClient70.dll,all
```

- 8) If you do not see this entry, you will need to reinstall FrameMaker and ePublisher.
- 9) If you do see this entry, please [submit a support request](#) and attach your project folder and source documents.

Master/Reference Page Images

External

Author: Ryan Hammett

Last Modified: February 2, 2006

ePublisher Pro

The purpose of this article is to explain how ePublisher Pro does handles FrameMaker master/reference page information and to enable users to include them in output.

ePublisher Pro does not use information from your FrameMaker master pages or reference pages. Thus, images that you may have as headers and/or footers will be ignored, as well as images from reference pages that are used repeatedly in your FrameMaker documents.

If you have images that must appear on HTML pages, you should convert them to .gif or .jpg format with a graphics utility application and save them in the User Files directory of your project. Then edit the Page.asp file or add the images through the Style Designer or Document Designer to incorporate the graphics, as needed. When you generate your project, the graphics will appear on each content or TOC page.

For example, you could do something like this for a Note:

- 1) Open your ePublisher Pro project.
- 2) Open the User Files directory (F12).
- 3) Copy and paste your image into the User Files directory.
- 4) Open the Style Designer (F10).
- 5) Click on the Paragraph Styles tab.
- 6) Click on the style you want to apply the Note image to.
- 7) Click on the Properties tab.
- 8) Click on the Bullet property.
- 9) Next to the Image attribute choose your note image.
- 10) To apply the negative indent, click on the Text property.
- 11) Next to the Indent attribute, set a negative indent to something like -50px.
- 12) Depending on your image size and negative indent, you may also need to specify the left margin to have the image appear correctly.

Note: Due to a known defect in ePublisher your bullets may be improperly aligned vertically. To workaround this, you will need to perform a project format override on Content.xml. Open Content.xml in a text editor like notepad, search for the string `bottom` and replace `bottom` with `top`. Save and then regenerate your project.

The graphics below illustrate the before and after results.



Before shot without the bullet note image.



After shot with bullet note image.