

Automap 9.0 FAQ

External

Last Modified: November 22, 2005

WebWorks Automap

The purpose of this article is to outline key information necessary for you to start using WebWorks Automap efficiently. You may expect full documentation to be provided with the product in the future.

Scripting

Which script variables are available at the various stages?

Variable	Project PreBuild/ PostBuild	Target PreBuild/ PostBuild	Group document retrieval
JobDir	X	X	X ^a
JobFile	X	X	X ^a
ProjectDir	X	X	X ^a
ProjectFile	X	X	X ^a
JobName	X	X	X
BuildAction	X	X	X
TargetDeployKey		X	
ErrorCount		X	
TargetName		X	
TargetOutputDir		X	
DeployFolder		X	
GroupName			X
FileListName			X
FileListPath			X

a. Not available when scanning documents in Job Wizard

How does the document retrieval script work when assigned to a group?

The text that is entered into the script editor is saved into a batch file and executed. If the script returns successfully, WebWorks AutoMap will look for a text file at the location specified by the variable "FileListPath" which should contain a line delimited list of documents the user would like to add to the group.

Why are certain variables not available when scanning documents in the Job Wizard or Job Editor?

During the job creation process, the "JobDir" and "JobFile" are not available because the job has not been saved yet., and the "ProjectDir" and "ProjectFile" variables are not available because a WebWorks ePublisher Pro project does not exist yet. They are only available during generation.

What is the current working directory when a script executes?

During generation the current working directory is set to the location of the job file's directory.

When scanning documents in the Job Editor, the current working directory is the job file's directory.

When scanning documents in the JobWizard, the current working directory is the location of the temporary script file.

Why does the hierarchy under a group get ignored, when a script is assigned to it?

WebWorks AutoMap will ignore the hierarchy because there currently is no way to specify the location of the documents retrieved by the script. A workaround is to create adjacent groups and place them before or after the group that has a script assigned to it.

Command-Line

Which command-line switches are valid when processing a WebWorks AutoMap job file versus a WebWorks ePublisher Pro project?

	WebWorks AutoMap job (.waj)	WebWorks ePublisher Pro Project (.wep)
-f, --nonotify	X	
-s, --stagingdir	X	
-u, --userformats	X	X
-t, --target		X
-n, --nodeploy	X	X
-c, --clean		X
-l, --cleandeploy	X	

Deployment

Why does WebWorks AutoMap report “Deployment failed. Can not find the deploy setting in preferences” even though it exists in WebWorks ePublisher Pro preferences?

Currently WebWorks AutoMap does not share preferences with WebWorks ePublisher Pro, so it is necessary to create deploy settings in WebWorks AutoMap that have the same names.

Formats

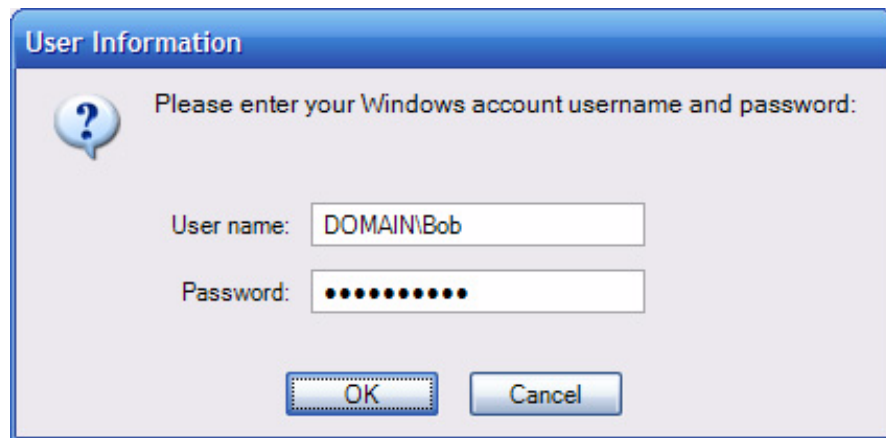
Why does WebWorks AutoMap reports that it can not load the custom user format when it is trying to generate?

By default WebWorks AutoMap and WebWorks ePublisher Pro both look in the same location for user formats. Verify that in the WebWorks AutoMap application preferences that the “User Format Directory” is pointing to the directory that contains the user format. If the command line interface is being used, the user format directory can be specified by using the “-u” or “--userformats” switches.

Administrator

Why does the job fail to generate when the job is run directly from the Administrator?

The Administrator uses the Windows Task Scheduler to schedule the job. It is recommended that the user specifies the username and password of their account when the “User Information” dialog is displayed.



Preferences

Why are the “File Mapping” and “Deploy Locations” preferences not shared between WebWorks AutoMap and WebWorks ePublisher Pro?

At this time, the preferences between both products are separate, however the user can copy the preferences if they wish to do so.

For file mappings, copy the file at:

C:\Documents and Settings\\Local Settings\Application Data\WebWorks\ePublisherPro\9.0\filemapping.prefs

to

C:\Documents and Settings\\Local Settings\Application Data\WebWorks\Automap\9.0\filemapping.prefs

For deployment locations, copy the file at:

C:\Documents and Settings\\Local Settings\Application Data\WebWorks\PublisherPro\9.0\deploy.prefs

to

C:\Documents and Settings\\Local Settings\Application Data\WebWorks\Automap\9.0\deploy.prefs

Adding Copyright Information to Output

External

Author: Ryan Hammett

Last Modified: October 6, 2006

ePublisher Pro

The purpose of this article is to explain how to add copyright information to the bottom of output pages.

In order to add copyright information to the bottom of output pages, you will need to modify Page.asp.

Please see [Creating Project Target Overrides](#) for more information on how to create a project target override.

Modifying Page.asp

- 1) Create a project target override on Page.asp.

Note:By default, Page.asp is located in C:\Program Files\WebWorks\ePublisher Pro\Formats\[FORMAT]\Pages, where [FORMAT] is the name of the format from which the target to be generated is based.

- 2) Open Page.asp in the text editor of your choice.
- 3) Place your cursor just before the closing `</body>` tag.
- 4) Add the following line of code just before `</body>`

```
<div style="font-size: 8pt; font-family: verdana; font-weight: bold; text-align: center;">Copyright &#169; 2006 Quadralay Corporation.</div>
```

So it should look something like this:

```
</script>

    <div style="font-size: 8pt; font-family: verdana; font-weight: bold;
    text-align: center;">Copyright &#169; 2006 Quadralay Corporation.</
    div>

</body>

</html>
```

Note:You can add any CSS style information you would like for the `style` attribute. In this example, we have set the font to 8pt, verdana, bold, and aligned center.

- 5) Save and close the file.
- 6) Regenerate your project.

Note:If you receive an error such as **[Error] An error occurred in 'LoadXMLWithoutResolver' while loading '[FILE_PATH]\Formats\WebWorks Help 5.0\Pages\Page.asp'**, you have entered invalid HTML or have tried to use XML replacements and conditions. Make

Common Word Errors

External

Author: Osman Tavilson

Last Modified: October 6, 2006

ePublisher Pro

The purpose of this article is to provide users with a troubleshooting procedures that have previously resolved the 3 common Word errors below.

"Cannot duplicate document '[docname.doc]' to '[path]\preview.docwif' and apply settings."

"Unable to create WIF document."

"Adapter "Word" failed in method "GenerateXML" at step "2: Word.GenerateXML"."

These are general errors that are being thrown for one of two reasons: either ePublisher cannot communicate with Word or there is something corrupt in the source document (.doc) or source document template (.dot).

Before you begin troubleshooting

- 1) Take note of the results as you go through the following steps, so that our support team can help you isolate the problem if you are not able to resolve it using these techniques.
- 2) Make sure all files and applications are on a local hard drive (C:) before testing, and not in a shared location.
- 3) We recommend that before making any of the changes suggested below to your system setup, that first, you close Microsoft Word, Outlook and WebWorks ePublisher, and verify that no WINWORD.EXE processes are running.

Note: To verify that none of these processes are still running, use the (Ctrl+Alt+Delete) shortcut command to open the Task Manager. Verify that the Processes tab is selected, and if you see any processes that say WINWORD.EXE or wpubword.exe, select them and choose End Process.

Troubleshooting

- 1) Are you using a custom template?

If you are using a custom template, often Word can embed references to missing paths to the template. To verify, open the source document that is causing these problems. Go to **Tools > Macro > Visual Basic Editor** and then go to **Tools > References**. There should be a list of Available References starting with the references that are checked. If you see a reference that is checked and says "Missing" in front of it, uncheck this reference and then save and close Word.

- 2) Do you encounter this error on all documents consistently?

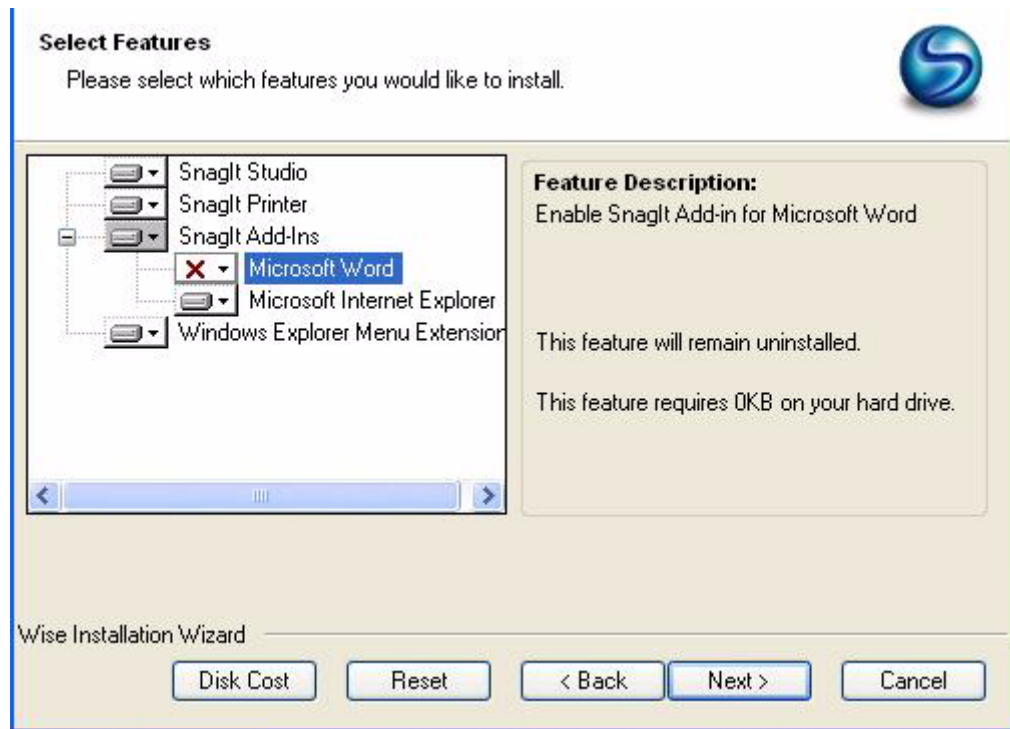
If not, there is something in your documents that is causing the crash and you will need to open a support case with the entire ePublisher project directory as well as a reduced version of the source document and custom template (if applicable) that will recreate the issue. In addition, please be prepared to answer the questions listed in this article.

3) Do you have any third party plug-ins such as SnagIt?

Earlier versions of SnagIt that are older than SnagIt 8 have caused problems in ePublisher in the past. There are currently no known issues with SnagIt 8. If you are using earlier versions than SnagIt 8, you will need to disable these in Word.

To disable SnagIt 7, you will need to uninstall SnagIt and then reinstall. When you reinstall, you will be asked to specify what features of SnagIt you want to install. Be sure when you get to this step to disable the SnagIt Add-In for Word as illustrated in the screen capture below.

Disabling SnagIt 7 Word Add-In



To disable SnagIt 6, close all instances of Word and then open SnagIt. Go to **Tools > Program Preferences > Addins** and then disable the Word Add-In.

4) Do you have anti-virus software?

Due to limitations in McAfee, Norton Anti-Virus and Norton SystemWorks, you may encounter problems when attempting to create and generate output from a WebWorks ePublisher project if you are running one of these products on your machine.

If you are running Norton Antivirus, make sure that you have scripting enabled, Norton has a script-blocking feature that prevents WebWorks Publisher from making some necessary calls to the system.

First, close all other applications (especially Outlook or other e-mail software), and ensure that no WINWORD processes are running, see Step 3 in "Before you Begin Troubleshooting". Then close Norton Anti-Virus or Norton SystemWorks, and try creating your project or generating your output. If closing the Norton product does not resolve the problem, we recommend you implement the workaround described in the following Microsoft KnowledgeBase article:

<http://support.microsoft.com/default.aspx?scid=kb;EN-US;q243579>

5) What are your macro settings in Word?

Check the Macro security in Word (Tools -> Macros -> Security). If the Security Settings are set to High or

Very High, try changing them to Medium. Before doing this, please be sure that you have ended all WINWORD processes, see Step 3 in "Before you Begin Troubleshooting", otherwise the security settings change may not take effect. Then, try creating a project again.

6) Are you using a Network or shared drive?

Often users who have their files located on a network or shared drive will encounter these errors. Users may be able to modify these files over a network drive; however, ePublisher accesses these files differently and depending on how your system administrator setup your security settings, you may not have sufficient privileges to access these files from a program like ePublisher even though you have access to modify the files directly. To verify, create a project on your local C: and add documents that are also located on your local C:. If you are then able to generate properly, you will need to get with your system administrator to setup the appropriate security settings.

7) Check the read/write permissions on the source files?

It never hurts to check to make sure the source files were not set to Read Only. Double check by right-clicking on your source document and verify that you have read/write access privileges to the file.

Disabling External CSS files

External

Author: Adam Goldberg

Last Modified: October 9, 2006

ePublisher Pro

The purpose of this article is to explain how to disable external CSS files from being generated.

For each document in your ePublisher Pro project, an external CSS file is created. The number of files in the project and the amount of style information in each document determines the size of these CSS files; they can become very large and redundant. Often, custom CSS files are used to get around this; however, ePublisher Pro will still emit the external CSS files. Often users will just delete the unused CSS files but this can be problematic if they are deploying straight to a web server.

We will look at how to modify pages.fti and styles.xsl files to allow users to choose whether or not they want to emit the external CSS files. You will need to be familiar with how to perform a project target override. For more information on how to perform a project target override, please see “Creating Project Target Overrides”.

Modifying pages.fti

Modifying the pages.fti file allows users to place an option setting in the UI that will allow users to enable or disable CSS file generation.

- 1) Perform a project target override on the file pages.fti.

Note:By default pages.fti is located in C:\Program Files\WebWorks\ePublisher Pro\Formats\[FORMAT]\Transforms where [FORMAT] is the format from which the target you are converting is based.

- 2) Open pages.fti and find the <Groups> tag. Add the following:

```
<Group name="css" />
```

So the modified section would look like this:

```
<Groups>
  <Group name="css" />
  <Group name="files" />
  <Group name="toc" />
  <Group name="accessibility" />
  <Group name="pdf" />
  <Group name="options" />
  <Group name="navigation" />
```

```
</Groups>
```

- 3) Under the `<Settings>` tag add the following:

```
<!-- Emit external CSS -->
<!--          -->
<Setting name="emit-external-css" group="css" default="true">
    <SettingClass name="boolean" />
</Setting>
```

So the modified section would look like this:

```
<Settings>
    <!-- Emit external CSS -->
    <!--          -->
    <Setting name="Emit External CSS" group="CSS" default="true">
        <SettingClass name="boolean" />
    </Setting>
    <!-- Encoding -->
    <!--          -->
```

- 4) Save and close this file.

Modifying styles.xsl

Modifying the code in `styles.xsl` will check the option setting from the `pages.fti` file and will determine based on the setting whether or not to emit the CSS files.

- 1) Perform a project target override on the file `styles.xsl`.

Note: By default `styles.xsl` is located in `C:\Program Files\WebWorks\ePublisher Pro\Formats[FORMAT]\Transforms` where `[FORMAT]` is the format from which the target you are converting is based.

- 2) Open `styles.xsl` and find the `<wwfiles:Files version="1.0">` tag. Add the following:

```
<xsl:if test="wwproject:GetFormatSetting('emit-external-css', 'false') = 'true'">
```

So the modified section would look like this:

```
<wwfiles:Files version="1.0">
<xsl:if test="wwproject:GetFormatSetting('emit-external-css', 'false') = 'true'">
<!-- Groups -->
<!--          -->
```

- 3) Under the `<xsl:variable name="VarProgressProjectGroupsEnd" select="wwprogress:End()" />` tag add the following:

```
</xsl:if>
```

So the modified section would look like this:

```
<xsl:variable name="VarProgressProjectGroupEnd" select="wwprogress:End()" />
</xsl:for-each>
```

```
<xsl:variable name="VarProgressProjectGroupsEnd"  
select="wwprogress:End()" />  
  
</xsl:if>  
  
</wwfiles:Files>  
  
</xsl:template>
```

- 4) Save and close this file.

Format Settings

- 1) If your ePublisher Pro project is open, save and close the project and then reopen it.
- 2) Go to Format > Format Settings and next to the new heading emit-external-css set the value to Disabled.
- 3) Regenerate All (Ctrl+Shift+F5).

Naming Output Files Using Filename Markers

External

Author: Ryan Hammett

Last Modified: October 6, 2005

ePublisher Pro

The purpose of this article is to explain how to control the name of the output files generated by ePublisher Pro by using filename markers.

Filename markers allow you to control the names of your output files. By default, ePublisher Pro will generate output file names based on the name of the source document. In order to specify names for your output files, you need to insert filename markers into the headings in your source document that have page splits applied. Once you have embedded filename markers into your source documents, you need to assign filename marker behavior to the filename markers. The following steps will walk you through embedding filename markers into Adobe FrameMaker or Microsoft Word documents and setting up the correct filename marker behavior in ePublisher Pro.

Using filename markers with Adobe FrameMaker:

- 1) In your FrameMaker document, go to Special > Marker.
- 2) From the Marker Type drop-down, choose Edit.
- 3) Type in Filename; this will be the name of the custom marker.
- 4) Click Add.
- 5) Locate the heading that starts the new page whose filename you want to assign.
- 6) Within that heading, insert a Filename marker.
- 7) For the marker text of the filename marker, type in the name you want to assign to the output file (without the file extension).
- 8) Save your FrameMaker document.
- 9) In ePublisher Pro, go to Project > Scan All Documents to pick up any new marker style information from your source documents.
- 10) Go to View > Style Designer.
- 11) Click on the Marker Styles tab.
- 12) Select Filename from the list of marker styles.
- 13) Choose Filename for the value of the marker type.
- 14) Close the Style Designer.
- 15) Go to Project > Regenerate All to generate your project.

Using filename markers with Microsoft Word:

- 1) In your Word document, locate the heading that starts the new page whose filename you want to assign.

- 2) Go to WebWorks > Markers.
- 3) Select Filename from the list of markers.
- 4) For the filename value, type in the name you want to assign to the output file.
- 5) Click Apply or OK to insert the filename marker.
- 6) Save your Word document.
- 7) In ePublisher Pro, go to Project > Scan All Documents to pick up any new marker style information from your source documents.
- 8) Go to View > Style Designer.
- 9) Click on the Marker Styles tab.
- 10) Select Filename from the list of marker styles.
- 11) Choose Filename for the value of the marker type.
- 12) Close the Style Designer.
- 13) Go to Project > Regenerate All to generate your project.

.Net Installation Error

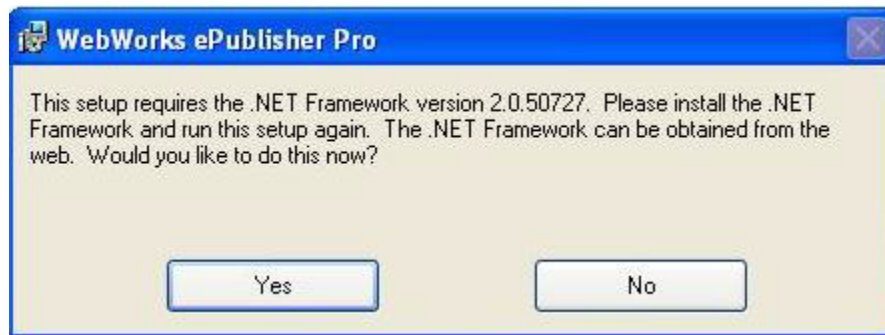
External

Author: Ryan Hammett

Last Modified: July 12, 2006

ePublisher Pro

The purpose of this article is to explain how to install the .Net Framework if the following error message appears when trying to install WebWorks ePublisher Pro.



Installing the Microsoft.NET 2.0 Framework

- 1) When you receive the error message above click **Yes**.
- 2) You will then be directed to the Microsoft .Net website.

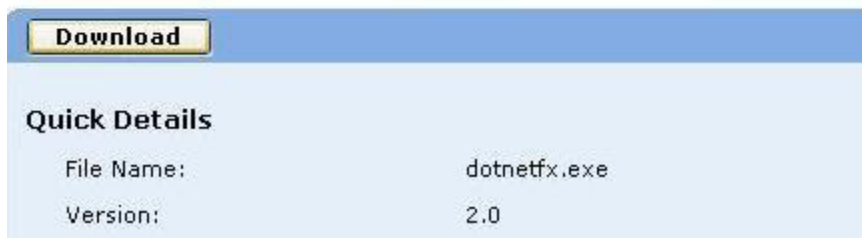
Microsoft .NET Framework Version 2.0 R (x86)

Brief Description

The Microsoft .NET Framework version 2.0 (x86) redistributable package is the set of files required to run applications developed to target the .NET Framework.

On This Page

- ↓ [Quick Details](#)
- ↓ [System Requirements](#)
- ↓ [Additional Information](#)
- ↓ [What Others Are Downloading](#)
- ↓ [Overview](#)
- ↓ [Instructions](#)
- ↓ [Related Resources](#)
- ↓ [Related Downloads](#)



The screenshot shows a blue header with a yellow 'Download' button. Below it is the 'Quick Details' section with the following information:

File Name:	dotnetfx.exe
Version:	2.0

- 3) Click on **Download** under the **On this Page** heading as shown in the image above.



- 4) Click on **Open** or **Save**.
Note: If you select **Save** this will allow you to save dotnetfx.exe file.
- 5) When **Open** or **Save** finish click **Open** and start installing Microsoft.NET 2.0
- 6) Once installation of Microsoft.NET 2.0 is complete, you can then install WebWorks ePublisher Pro.

Linking to PDFs in FrameMaker and Word

External

Author: Ryan Hammett

Last Modified: September 29, 2006

ePublisher Pro

The purpose of this article is to explain how to properly link to PDFs in FrameMaker and Word documents and have them open in a new window.

This article will go over the proper way to link to PDFs in ePublisher. In addition, this article will also go over how to modify content.xsl to have your PDFs open in a new window.

In FrameMaker

In order to create a link to a PDF file from WebWorks Help, you will need to first create a link to a PDF in your FrameMaker document. To achieve this, create a hypertext marker within your selected text area (where you would like to create your link).

- 1) In the FrameMaker menu, go to **Special > Hypertext** (This will open the Hypertext box.)
- 2) From the Command dropdown menu, choose **Message Client**.
- 3) In the Syntax text box, type `message openfile relative_path`.

Example:

```
message openfile Testing/Sample.pdf
```

Note: Before generating your project in ePublisher, you can test your link in FrameMaker by using the shortcut Ctrl + Alt and click your link. If your links in FrameMaker are done correctly, they should generate properly in WebWorks ePublisher.

- 4) Save and close the file.
- 5) Regenerate the project.

In Word

- 1) In the Word menu, go to **Insert > Hyperlink**.
- 2) Select "Existing File or Web Page" for the "Link to" property.
- 3) In the "Text to display" option, type in the text you want to display for the link.
- 4) Navigate and select the PDF file and click OK.

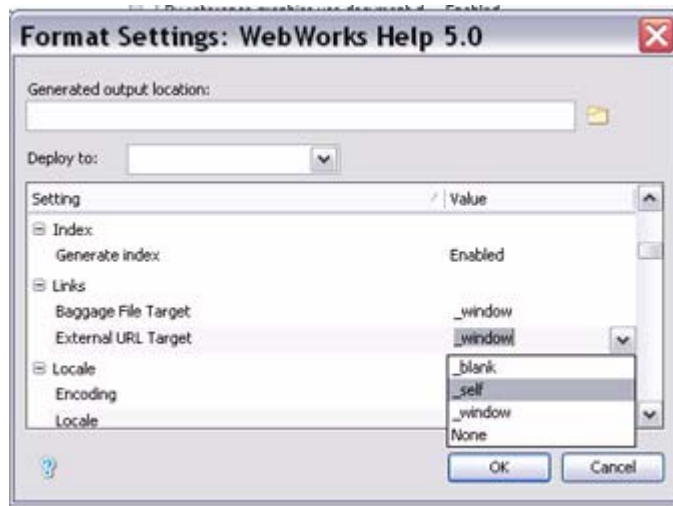
Note: Before generating your project in ePublisher, you can test your link in Word by using the shortcut selecting Ctrl + click to follow your link. If your links in Word are done correctly, they should generate properly in WebWorks ePublisher.

- 5) Save and close the file.

6) Regenerate the project.

Setting PDFs to Open in a New Window

New to ePublisher Pro 9.2, you can now specify in the UI how your external links will be launched. By default, PDF links will open in a separate browser window. In the **Format Settings** dialog, you can also choose to open external/baggage files in the current topic frame



Modifying the TOC content in the XML+XSL format

External

Author: Matthew D. Wimpee

Last Modified: June 8, 2006

ePublisher Pro

The purpose of this article is to explain how to modify the content of the TOC page when using the XML+XSL format.

If you are using the the XML+XSL format for your online help and you want to change the formatting of the content on the TOC page (e.g. changing the font of the TOC entries), then you must perform a target override on and modify the “document.xml” file.

Troubleshooting Steps

The first part is to create a target override on the document.xml file, which is located in the installation directory. Be default the installation directory is located at C:\Program Files\WebWorks\ePublisher Pro\Formats\XML+XSL\Files\xsl. For more information on creating target overrides read “Creating Project Target Overrides”. Once you have created your target override on document.xml, you may modify this file to affect the formatting of the content of the TOC. The following steps represent only a simple example demonstrating how you can extend the capabilities of ePublisher Pro.

- 1) Right-click on document.xml and open it in your preferred text editor.
- 2) Search for the string `def-data`.
- 3) Find the following line of code:

```
<xsl:template match="*[@wp:type = 'def-data']">
```
- 4) Look for the `<dd>` tag directly beneath the above line of code.
- 5) In this `<dd>` tag you will add a style attribute. This will change the style of the TOC page.
Example: `<dd style="font-family: Arial">`
- 6) Save and close document.xml.
- 7) Regenerate your ePublisher Pro project. Select Project > Regenerate All.

You will now see that the content of the TOC page in the XML+XSL format output has been changed to the style that you added to the `<dd>` tag in the document.xml file.

Modifying the Appearance of Bullets

External

Author: Ryan Hammett

Last Modified: October 9, 2006

ePublisher Pro

The purpose of this article is to provide an example of how to modify the appearance of bullets.

At this time, ePublisher Pro does not support structured lists due to CSS limitations. This article will show you how to replace bullets from your source document and modify their appearance. The following method is also useful on how to replace a bullet if you have a dingbat or symbol bullet that does not appear correctly in your browser.

Modifying the appearance of bullets:

- 1) In ePublisher Pro, select **View > Style Designer**.
- 2) Click on the Paragraph Styles tab.
- 3) Select the paragraph style that your bulleted list uses.
- 4) Click on the Properties tab.
- 5) Select the Bullet property.
- 6) In the text field place a bullet character • .

Note: This will remove any dingbat or symbol font issues. You can also place a space or any other text here and ePublisher will replace the bullet from the source document with whatever you place in the text field. You can get a bullet character from Word or simply copy and paste the one in this article.

- 7) Click on the Character Styles tab.
- 8) Click on the New Style button in the upper left hand corner.
- 9) Name the new style something like MyBullet.
- 10) Click on the Properties tab and modify any properties.

Example:

Click on the Font property and set the width to 20pt.

Click on the Text property and set the Color to Red.

- 11) Click on the Paragraph Styles tab.
- 12) Select the paragraph style that your bulleted list uses.
- 13) Click on the Bullet property.
- 14) Set the Character Style to MyBullet.
- 15) Close the Style Designer.

16) Select **Project > Regenerate All**.

Modifying the Appearance of Popups

External

Author: Ryan Hammett

Last Modified: October 9, 2006

ePublisher Pro

The purpose of this article is to provide an example on how to modify the appearance of popups.

Once you have successfully created popups, you are now ready to modify the appearance of your popups. For more information on creating popups, please see our "Creating Popups" knowledge base article.

As discussed in the "Creating Popups" knowledge base article, there are two methods you can use to create popups: using markers and using paragraph styles. This article will provide an example on how to modify the appearance of popups for either method. If you used markers to create your popups, please see "Modifying popups created with markers". If you used paragraph style to create your popups, please see "Modifying popups created with paragraph styles".

Modifying popups created with markers

- 1) Go to View > Style Designer.
- 2) Click on the Page Styles tab.
- 3) Click on the Add New Style button to create a new page style for your popups.
- 4) Give the new page style a name.

Note: This step is very important. The name you specify here should be the same as the name you specified for the popup marker in your source document. So for example, from the "Creating Popups" knowledge base article, you may have named this page style Popup_Page_Style.

- 5) Make modifications to the new page style. See below for an example.
 - Click on the Properties tab.
 - Select the Margins property.
 - Set all the Margins to 0px.
 - Select the Padding property.
 - Set all Padding to 0px.
 - Click on the Options tab.
 - Set Breadcrumbs shown at top of page to Disabled.
 - Set Navigation links shown at top of page to Disabled.
- 6) Click on the Paragraph Styles tab.
- 7) Select the paragraph style associated with the popup text.
- 8) Click on the Properties tab.
- 9) Make modifications to the paragraph style. See below for an example.

- Click on the HTML property.
 - Set the Width of the popup block to 250px.
- 10) Close the Style Designer and type `Ctrl+Shift+F5` to regenerate your project.

Modifying popups created with paragraph styles

- 1) Go to View > Style Designer.
- 2) Click on the Page Styles tab.
- 3) Click on the Add New Style button to create a new page style for your popups.
- 4) Give the new page style a name.
- 5) Make modifications to the new page style. See below for an example.
 - Click on the Properties tab.
 - Select the Margins property.
 - Set all the Margins to 0px.
 - Select the Padding property.
 - Set all Padding to 0px.
 - Click on the Options tab.
 - Set Breadcrumbs shown at top of page to Disabled.
 - Set Navigation links shown at top of page to Disabled.
- 6) Click on the Paragraph Styles tab.
- 7) Select the paragraph style you used to create your popups.
- 8) Click on the Properties tab.
- 9) Make modifications to the paragraph style. See below for an example.
 - Click on the HTML property.
 - Set the Width of the popup block to 250px.
- 10) Click on the Options tab.
- 11) For the Popup page style select the name of your popup page style.
- 12) Close the Style Designer and type `Ctrl+Shift+F5` to regenerate your project.

Creating Popups

External

Author: Ryan Hammett

Last Modified: October 9, 2006

ePublisher Pro

The purpose of this article is to provide an example of how to create popups.

In order to create popups, you first must create hyperlinks from the popup topic to the popup text. The popup topic is the term or phrase that the user hovers over in order to get the popup window; the popup text is the content that is contained within the popup window.

After you have created hyperlinks, there are two methods for creating the actual popup. One way is to utilize markers to define the content contained within the popup window. The other method, which user's may find more convenient, is to utilize paragraph styles that are associated with a popup behavior. The major difference is time. Using markers allows for backward compatibility with our previous products and more control, however it is much more time consuming to place markers in your document than to simply apply a paragraph style.

Once you have successfully created your popups, you can modify the appearance of your popups. Please see "Modifying the Appearance of Popups" for more information.

The following sections will walk you through creating popups:

[Creating Popups with Markers For Adobe FrameMaker](#)

[Creating Popups with Markers For Microsoft Word](#)

[Creating Popups with Paragraph Styles For Adobe FrameMaker](#)

[Creating Popups with Paragraph Styles For Microsoft Word](#)

Creating Popups with Markers

For Adobe FrameMaker

- 1) In your source document, create a hyperlink from the popup topic to the popup text.
- 2) Go to **Special > Marker**.
- 3) From the drop-down list of Marker Types, choose **Edit**.
- 4) Name the marker `Popup`.

- 5) Click the **Add** button.
- 6) Create a second marker and name it `PopupEnd`.
- 7) Locate the starting point for the popup text.
- 8) Insert the Popup marker.

Note: If you want to modify the appearance of your popup, type the name of the page style you will associate with your popups (i.e. `Popup_Page_Style`) for the Marker Text.

- 9) Locate the ending point for the popup text.
- 10) Insert the `PopupEnd` marker.
- 11) Save the FrameMaker document.
- 12) In WebWorks ePublisher Pro, select the top-level group in the Document Manager.
- 13) Press `Ctrl + F7` to scan the source documents for new style information.
- 14) Press `F10` to open the Style Designer.
- 15) Click on the Marker Styles tab.
- 16) Select the Popup marker and select one of the following behaviors:
 - Choose **Popup start** if you want your popup text to appear in a window and through a clickable link that redirects users to the actual location of the popup text (i.e. a Glossary).
 - Choose **Popup start with no output** if you only want the popup text to appear in a window.
- 17) Select the `PopupEnd` marker and select the **Popup end** behavior.
- 18) Press `Ctrl + F5` to generate the project.

For Microsoft Word

- 1) In your source document, create a hyperlink from the popup topic to the popup text. Do this by inserting a bookmark at the popup text and creating a hyperlink from the popup topic to the bookmark.
- 2) After you have created the hyperlink, place the insertion point at the beginning of the popup text.
- 3) Go to **WebWorks > Markers**.
- 4) Select **Popup** or **PopupOnly** from the list of markers.
 - Choose **Popup** if you want your popup text to appear in a window and through a clickable link that redirects users to the actual location of the popup text (i.e. a Glossary).
 - Choose **PopupOnly** if you only want the popup text to appear in a window.

- 5) Click **OK** to insert the popup marker.

Note: If you want to modify the appearance of your popup, type the name of the page style you will associate with your popups (i.e. `Popup_Page_Style`) for the Value.

- 6) Place the insertion point where the popup text ends.
- 7) Go to **WebWorks > Markers**.
- 8) Select **PopupEnd**.
- 9) Save the Word document.
- 10) In WebWorks ePublisher Pro, select the top-level group in the Document Manager.
- 11) Press `Ctrl + F7` to scan the source documents for new style information.
- 12) Press `Ctrl + F5` to generate the project.

Creating Popups with Paragraph Styles

For Adobe FrameMaker

- 1) In your source document, create a hyperlink from the popup topic to the popup text.
- 2) Apply any paragraph style to the popup text (i.e. `PopupStyle`).
- 3) Save the FrameMaker document.
- 4) In WebWorks ePublisher Pro, select the top-level group in the Document Manager.
- 5) In WebWorks ePublisher Pro, press `Ctrl + F7` to scan the source documents for new style information.
- 6) Go to **View > Style Designer**.
- 7) Click on the Paragraph Styles tab.
- 8) Select the paragraph style you used for the popup text.
- 9) Click on the options tab.
- 10) Choose the behavior you want for your popups by choosing the appropriate option for the paragraph style. There are two items that will dictate which option you will choose for this paragraph style:
 - 1) How the user would like the popup to be displayed.
 - Popup window only
 - Popup window and through a clickable link
 - 2) How many paragraphs the popup will contain.
 - Single paragraph.

- Multiple paragraphs.

This defines four scenarios:

- 1) Popup Window Only with a single paragraph.
 - Choose Define no output for the paragraph to be displayed in the popup window.
- 2) Popup Window only with multiple paragraphs.
 - Choose Define no output for the first paragraph to be displayed in the popup window.
 - Choose Append no output for all following paragraphs.
- 3) Popup Window and clickable link with a single paragraph.
 - Choose Define for the paragraph that will be displayed in the window. This is the same paragraph that will appear on the HTML page to which the link will redirect.
- 4) Popup Window and clickable link with multiple paragraphs.
 - Choose Define for the first paragraph that will be displayed in the window. This is the same paragraph that will appear on the HTML page to which the link will redirect.
 - Then choose Append for all following paragraphs.
- 5) Close the Style Designer and press `Ctrl + F5` to generate the project.

For Microsoft Word

- 1) In your source document, create a hyperlink from the popup topic to the popup text. Do this by inserting a bookmark at the popup text and creating a hyperlink from the popup topic to the bookmark.
- 2) Apply any paragraph style to the popup text (i.e. PopupStyle).
- 3) Save the Word document.
- 4) In WebWorks ePublisher Pro, press `Ctrl + F7` to scan the source documents for new style information.
- 5) Go to **View > Style Designer**.
- 6) Click on the Paragraph Styles tab.
- 7) Select the paragraph style you used for the popup text.
- 8) Click on the options tab.
- 9) Choose the behavior you want for your popups by choosing the appropriate option for the paragraph style. There are two items that will dictate which option you will choose for this paragraph style:
 - 1) How the user would like the popup to be displayed.

- Popup window only
 - Popup window and through a clickable link
- 2) How many paragraphs the popup will contain.
- Single paragraph.
 - Multiple paragraphs.

This defines four scenarios:

- 1) Popup Window Only with a single paragraph.
 - Choose Define no output for the paragraph to be displayed in the popup window.
- 2) Popup Window only with multiple paragraphs.
 - Choose Define no output for the first paragraph to be displayed in the popup window.
 - Choose Append no output for all following paragraphs.
- 3) Popup Window and clickable link with a single paragraph.
 - Choose Define for the paragraph that will be displayed in the window. This is the same paragraph that will appear on the HTML page to which the link will redirect.
- 4) Popup Window and clickable link with multiple paragraphs.
 - Choose Define for the first paragraph that will be displayed in the window. This is the same paragraph that will appear on the HTML page to which the link will redirect.
 - Then choose Append for all following paragraphs.
- 5) Close the Style Designer and press `Ctrl + F5` to generate the project.

ePublisher Equivalent Format Settings in Publisher 2003

External

Author: Ryan Hammett

Last Modified: May 23, 2006

ePublisher Pro

The purpose of this article is to explain the ePublisher equivalent format settings found in Publisher 2003 project options.

In Publisher 2003, there are many Project Options for each format (Project > Options). In ePublisher, these Project Options are known as Format Settings (Format > Format Settings).

General Settings for all Formats (Templates)

The following table covers the General Project Option settings found in all the formats for Publisher 2003. These general settings include the General tab, Folders tab and FrameMaker (FM only) tab in Publisher 2003.

Tab in 2003	Setting in 2003	ePublisher Equivalent
General	Generate Pages	View > Style Designer > Paragraph Styles > Default style > Options > Generate Output
	Generate Graphics	View > Style Designer > Graphic Styles > Options > Generate Output
	Generate 8.3 file names	Not Supported
	Use pre-2003 file naming conventions	Not Supported
	Use the following file naming rules for pages and graphics	Not Supported
	Convert any white space to underscores	Not Supported
	Line Endings	Not Supported
	Max Buffer	Not Supported
	Language Encoding	Format > Format Settings > Locale
	Character Encoding	Format > Format Settings > Encoding
	Project to project linking context	Format > Merge Settings > Merge Title

Tab in 2003	Setting in 2003	ePublisher Equivalent
Folders	Output Folder	Format > Format Settings > Encoding > Generated Output Location
	Images Folder	Not Supported - Done by default
	Support Folder	Not Applicable
	Temporary File Folder	Not Applicable
	Keep these folders relative to the project if it moves	Not Supported - Done by default
	Copy the following files from SUPPORT to OUTPUTDIR	View > User Files (place the files you want copied over in the Files directory)
FrameMaker (FrameMaker only)	Automatically remove front matter when adding books to this project	Not Supported in GUI - Done by default
	Automatically re-order the TOC and IX when adding books (legacy)	Not Supported in GUI - TOC and IX in FrameMaker are never used
	Automatically remove the TOC and IX when adding books (2003 and later)	Not Supported in GUI - Done by default
	Map to structure elements rather than formats	Not Supported

WebWorks Help Specific Settings

The following table covers the Project Option settings specifically for WebWorks Help in Publisher 2003.

Tab in 2003	Setting in 2003	ePublisher Equivalent
WebWorks Help	Use Java applet for navigation if a suitable JRE can be found	The Java applet is no longer supported
	Contents	Format > Format Settings > Generate table of contents
	Index	Format > Format Settings > Generate index
	Search	Format > Format Settings > Show search tab
	Favorites (requires Java and cookies)	Format > Format Settings > Show favorites tab
	Using cookies is OK	Format > Format Settings > Use browser cookies

Tab in 2003	Setting in 2003	ePublisher Equivalent
	The entry point to this helpset should be a file named	Format > Format Settings > Top level filename
	Synchronize Contents	Format > Format Settings > Automatically synchronize the TOC
	Next/Previous Topic	Format > Format Settings > Show previous & next toolbar buttons
	E-mail	Format > Format Settings > Company email address
	Print	Format > Format Settings > Show print toolbar button
	Bookmark	Format > Format Settings > Show bookmark toolbar button
Context Sensitivity	Use Filename markers as topic aliases	Not supported
	Preview Implementation	Not supported in GUI
Accessibility	Ask users the first time they view the helpset if they'd like accessibility features and remember their preferences (requires cookies)	Format > Format Settings > WebWorks Help accessibility
	Don't ask users. If I want the accessible version I will specify it in the link to my helpset	Format > Format Settings > WebWorks Help accessibility
	Don't ask users. Always use the accessible version	Format > Format Settings > WebWorks Help accessibility
	Generate an accessibility report for this project after each conversion	Format > Format Settings > Generate accessibility report
	Validate that each image has an alt tag	Format > Format Settings > Validate accessibility image alternate tags
	Validate that each image map hotspot has an alt tag	Format > Format Settings > Validate accessibility image map alternate tags
	Validate that each image has a long description	Format > Format Settings > Validate accessibility image long descriptions
	Automatically generate place holder long description files	Format > Format Settings > Validate accessibility image long descriptions
	Include visible [D] links to images that have long descriptions	Format > Format Settings > Include visible [D] links to images with long descriptions

Tab in 2003	Setting in 2003	ePublisher Equivalent
	Validate that each table has a summary	Format > Format Settings > Validate accessibility table summaries
TOC/IX	Treat multi-level TOC transitions as	Format > Format Settings > Collapse table of contents

Dynamic HTML Specific Settings

The following table covers the Project Option settings specifically for Dynamic HTML in Publisher 2003.

Tab in 2003	Setting in 2003	ePublisher Equivalent
TOC/IX	Generate a Table of Contents file named	Format > Format Settings > Table of contents file name
	Treat multi-level TOC transitions as	Format > Format Settings > Collapse table of contents
	Generate an Index file named	Format > Format Settings > Generate index / Index filename
	Use page titles as link text	Not Supported in GUI - Done by default
	Generate a Frameset file named	Not Supported
Accessibility	Generate an accessibility report for this project after each conversion	Format > Format Settings > Generate accessibility report
	Validate that each image has an alt tag	Format > Format Settings > Validate accessibility image alternate tags
	Validate that each image map hotspot has an alt tag	Format > Format Settings > Validate accessibility image map alternate tags
	Validate that each image has a long description	Format > Format Settings > Validate accessibility image long descriptions
	Automatically generate place holder long description files	Format > Format Settings > Validate accessibility image long descriptions
	Include visible [D] links to images that have long descriptions	Format > Format Settings > Include visible [D] links to images with long descriptions
	Validate that each table has a summary	Format > Format Settings > Validate accessibility table summaries

Microsoft HTML Help Specific Settings

The following table covers the Project Option settings specifically for Microsoft HTML Help in Publisher 2003.

Tab in 2003	Setting in 2003	ePublisher Equivalent
HTML Help	Title	Not supported in GUI - must override the template.hhp file
	Compiled File	Filename is the value of the Group Name as specified in the Document Manager
	Install Location	Format > Format Settings > HTML Help location
	Default Window	Not supported in GUI - must override the template.hhp file
	Window Definitions	Not supported in GUI - must override the template.hhp file
	Build a binary index	Format > Format Settings > HTML Help binary index
Context Sensitivity	Automatically generate a map file and aliases	Not supported in GUI - Done by default
	Use the following map file	Format > Format Settings > HTML Help custom map file
	Use Filename markers as topic aliases	Not Supported
	Test	Not supported in GUI - must use HTML Help Workshop
TOC/IX	Treat multi-level TOC transitions as	Format > Format Settings > Collapse table of contents
Accessibility	Generate an accessibility report for this project after each conversion	Format > Format Settings > Generate accessibility report
	Validate that each image has an alt tag	Format > Format Settings > Validate accessibility image alternate tags
	Validate that each image map hotspot has an alt tag	Format > Format Settings > Validate accessibility image map alternate tags
	Validate that each image has a long description	Format > Format Settings > Validate accessibility image long descriptions
	Automatically generate place holder long description files	Format > Format Settings > Validate accessibility image long descriptions

Tab in 2003	Setting in 2003	ePublisher Equivalent
	Include visible [D] links to images that have long descriptions	Format > Format Settings > Include visible [D] links to images with long descriptions
	Validate that each table has a summary	Format > Format Settings > Validate accessibility table summaries

Microsoft WinHelp Specific Settings

The following table covers the Project Option settings specifically for Microsoft WinHelp in Publisher 2003.

Tab in 2003	Setting in 2003	ePublisher Equivalent
TOC/IX	(TOC name field)	Format > Format Settings > WinHelp title
	Treat multi-level TOC transitions as	Format > Format Settings > Collapse table of contents

Oracle Help Specific Settings

The following table covers the Project Option settings specifically for Oracle Help in Publisher 2003.

Tab in 2003	Setting in 2003	ePublisher Equivalent
Oracle Help	Title	Format > Format Settings > Helpset title
	JAR File	Filename is the value of the Group Name as specified in the Document Manager
	OHJ install location	Format > Format Settings > Oracle Help Location
	JDK install location	Format > Format Settings > JDK location
	Include TOC navigator tab	Format > Format Settings > Generate table of contents
	Include index navigator tab	Format > Format Settings > Generate index
	Include search navigator tab	Format > Format Settings > Enable search tab
TOC/IX	Treat multi-level TOC transitions as	Format > Format Settings > Collapse table of contents

Tab in 2003	Setting in 2003	ePublisher Equivalent
Accessibility	Generate an accessibility report for this project after each conversion	Format > Format Settings > Generate accessibility report
	Validate that each image has an alt tag	Format > Format Settings > Validate accessibility image alternate tags
	Validate that each image map hotspot has an alt tag	Format > Format Settings > Validate accessibility image map alternate tags
	Validate that each image has a long description	Format > Format Settings > Validate accessibility image long descriptions
	Automatically generate place holder long description files	Format > Format Settings > Validate accessibility image long descriptions
	Include visible [D] links to images that have long descriptions	Format > Format Settings > Include visible [D] links to images with long descriptions
	Validate that each table has a summary	Format > Format Settings > Validate accessibility table summaries

Simple HTML Help Specific Settings

The following table covers the Project Option settings specifically for Simple HTML Help in Publisher 2003.

Tab in 2003	Setting in 2003	ePublisher Equivalent
TOC/IX	Generate a Table of Contents file named	Format > Format Settings > Table of Contents filename
	Treat multi-level TOC transitions as	Format > Format Settings > Collapse table of contents
	Generate an Index file named	Format > Format Settings > Generate index / Index filename
	Use page titles as link text	Not Support in GUI - Done by default
	Generate a Frameset file named	Not Supported

Palm Reader Specific Settings

The following table covers the Project Option settings specifically for Palm Reader in Publisher 2003.

Tab in 2003	Setting in 2003	ePublisher Equivalent
TOC/IX	Generate an Index named	Format > Format Settings > Generate index / Index filename
	Use page titles as link text	Not supported in GUI - Done by default

Sun JavaHelp Specific Settings

The following table covers the Project Option settings specifically for Sun JavaHelp in Publisher 2003.

Tab in 2003	Setting in 2003	ePublisher Equivalent
JavaHelp	Title	Format > Format Settings > Helpset title
	JAR File	Filename is the value of the Group Name as specified in the Document Manager
	JH install location	Format > Format Settings > JavaHelp location
	JDK install location	Format > Format Settings > JDK location
	Include TOC navigator tab	Format > Format Settings > Generate table of contents
	Include index navigator tab	Format > Format Settings > Generate index
	Include search navigator tab	Format > Format Settings > Enable search tab
TOC/IX	Treat multi-level TOC transitions as	Format > Format Settings > Collapse table of contents

Microsoft Reader Specific Settings

The following table covers the Project Option settings specifically for Microsoft Reader in Publisher 2003.

Tab in 2003	Setting in 2003	ePublisher Equivalent
TOC/IX	Generate a Table of Contents file named	Format > Format Settings > Table of Contents filename
	Treat multi-level TOC transitions as	Format > Format Settings > Collapse table of contents
	Generate an Index file named	Format > Format Settings > Generate index / Index filename
	Use page titles as link text	Not Support in GUI - Done by default
Accessibility	Generate an accessibility report for this project after each conversion	Format > Format Settings > Generate accessibility report
	Validate that each image has an alt tag	Format > Format Settings > Validate accessibility image alternate tags

Tab in 2003	Setting in 2003	ePublisher Equivalent
	Validate that each image map hotspot has an alt tag	Format > Format Settings > Validate accessibility image map alternate tags
	Validate that each image has a long description	Format > Format Settings > Validate accessibility image long descriptions
	Automatically generate place holder long description files	Format > Format Settings > Validate accessibility image long descriptions
	Include visible [D] links to images that have long descriptions	Format > Format Settings > Include visible [D] links to images with long descriptions
	Validate that each table has a summary	Format > Format Settings > Validate accessibility table summaries

Style Mappings Migration

External

Author: Ryan Hammett

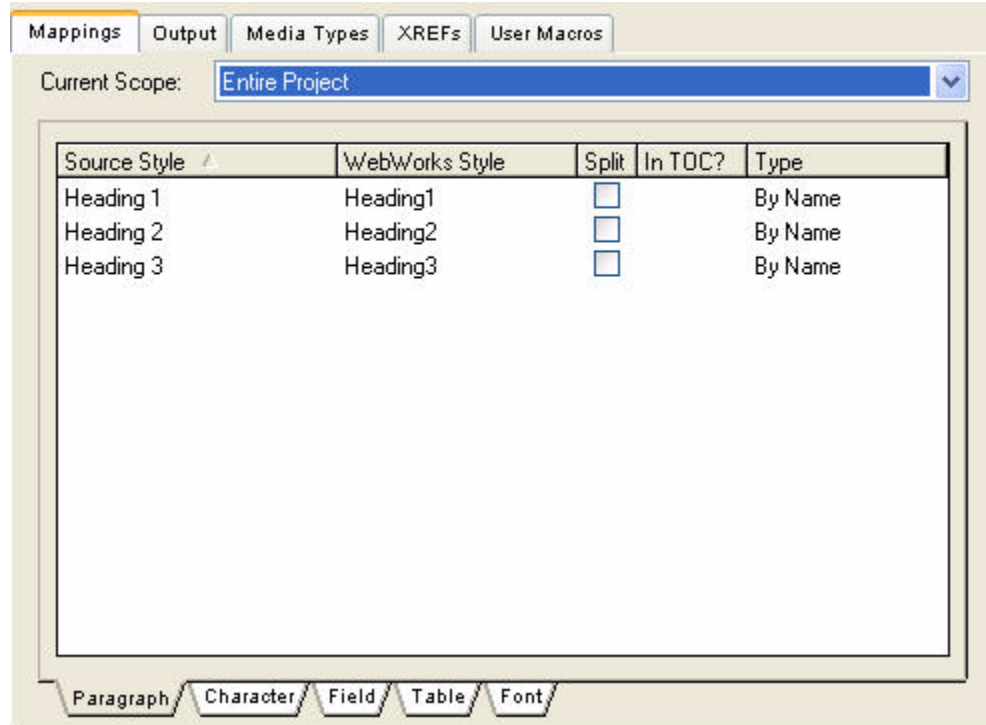
Last Modified: October 9, 2006

ePublisher Pro

The purpose of this article is to explain how to properly migrate Style Mappings in former versions of Publisher into an ePublisher Pro project.

Before migrating a project from previous versions of Publisher to ePublisher Pro, you will need to double check your style mappings. If the mapping in your previous version of Publisher is set to type "By Name", then there is a chance that not all of the Source Styles will migrate over to ePublisher Pro. You will need to manually reselect the WebWorks Style to be mapped and this will change the type to "From Template".

For example, in the graphic below notice that the Source Styles have spaces between the name and the number. If the current mappings are left to "By Name", they will not migrate over into ePublisher Pro.

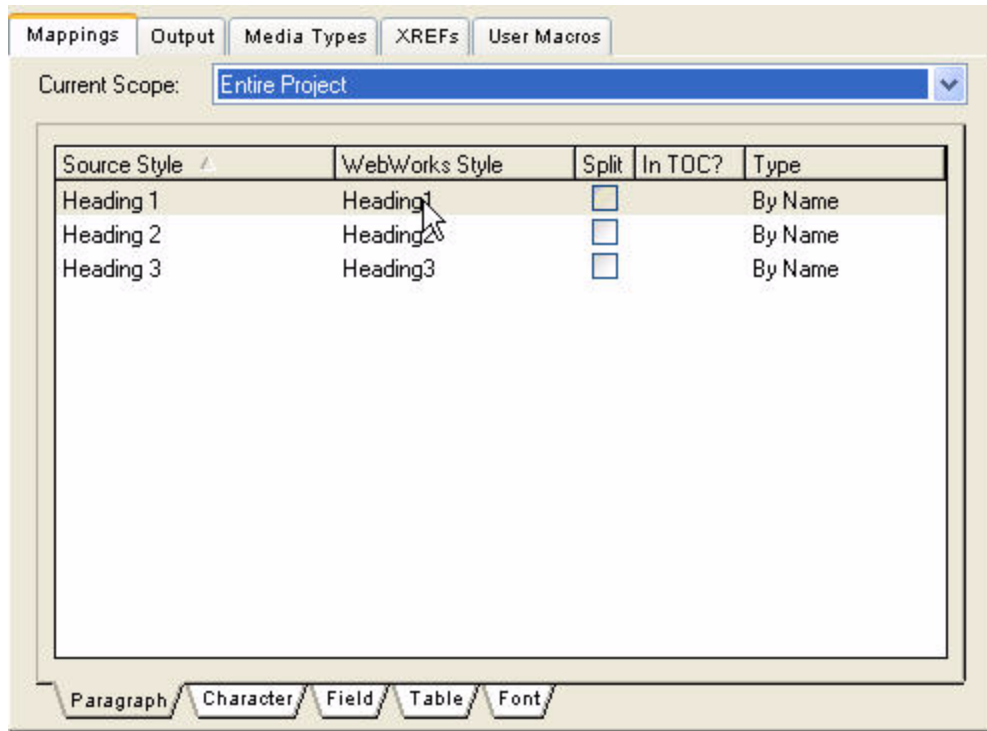


Graphic illustrates default mappings set to type "By Name".

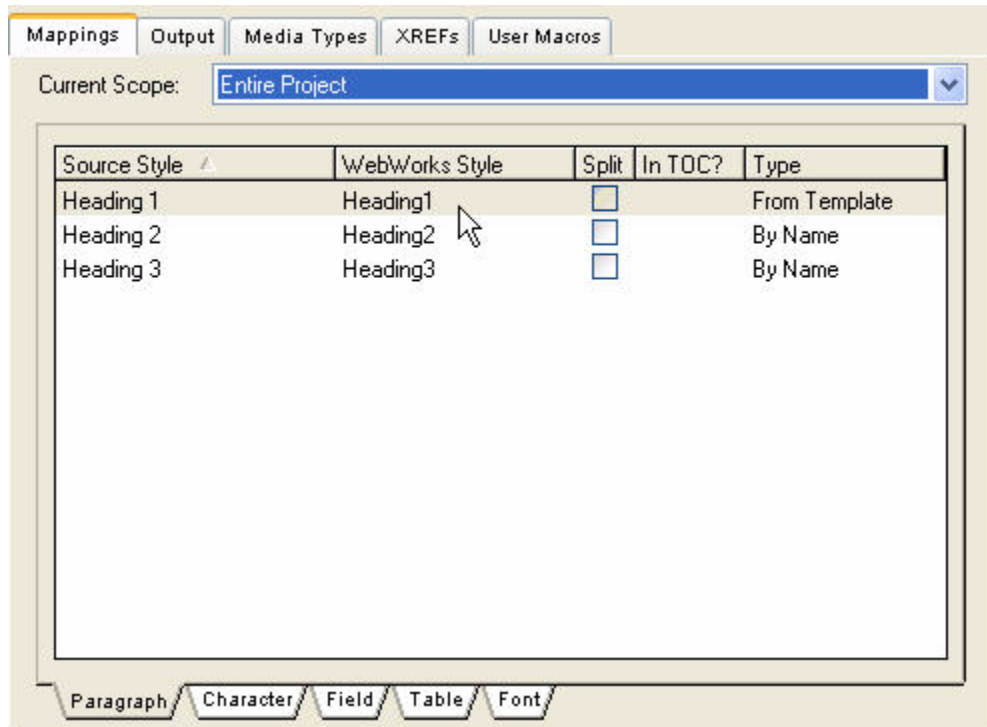
Reselecting Style Mappings

- 1) Open your Publisher project.
- 2) For each Source Style that is set to type "By Name", select the WebWorks Style and reselect the same WebWorks Style name to change the type to "From Template".

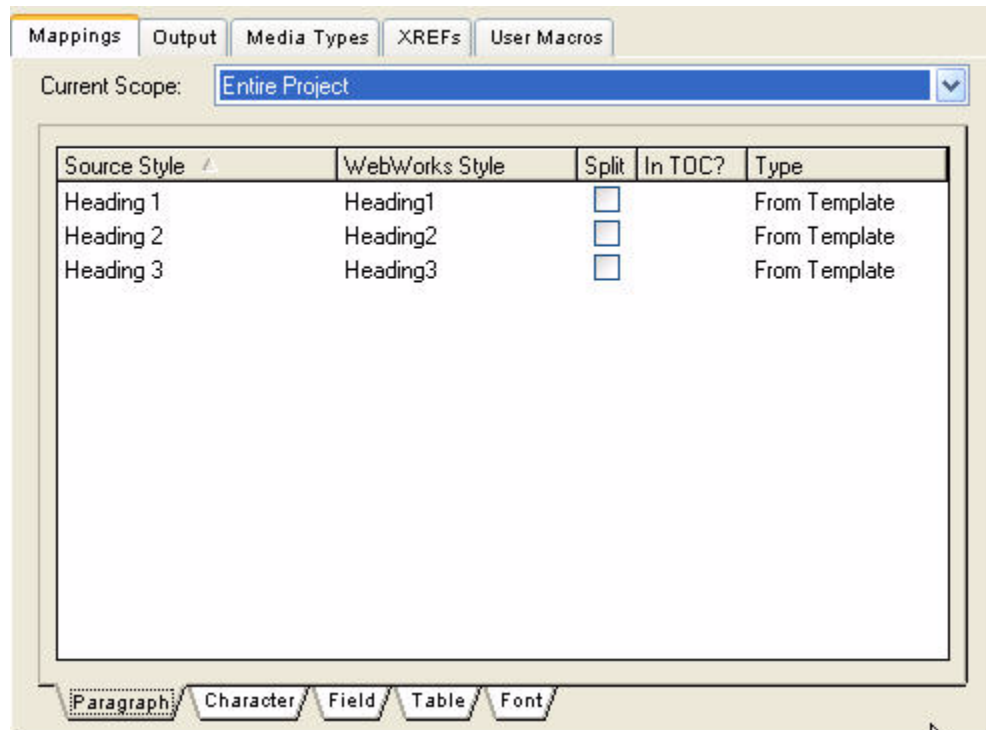
Before:



After:



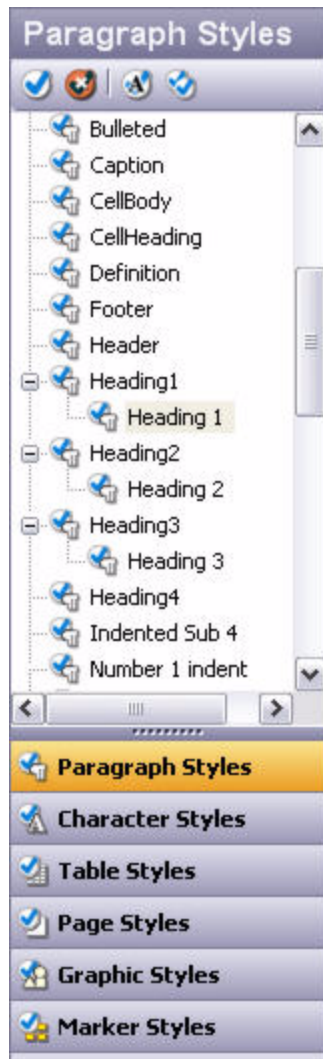
3) Repeat step 2 for each Source Style that you want to migrate over.



Change all styles set to type "By Name" to type "From Template".

4) Save and migrate your project.

Note: In ePublisher Pro, notice that the source document style name is placed under the project style name.



In ePublisher, Source Style names are placed under the Project Style names.

TOC Font Size Adjustment

External

Author: Osman Tavilson

Last Modified: July 6, 2006

ePublisher Pro

The purpose of this article is to explain how to change the size of the headings in the TOC pane.

Some project modifications cannot be made through the GUI so we have created this article to provide steps for modifying the `wwhelp_settings.xml` file using project format overrides. When you create a project target override you are only overriding the specific file that you want to modify; you are also ensuring that these modifications are not lost when installing updates to ePublisher Pro. For more information on how to perform a project target override, please see [““Creating Project Target Overrides””](#).

Note: The default location of `wwhelp_settings.xml` is: `C:\Program Files\WebWorks\epublisher Pro\Formats\WebWorks Help 5.0\Skins\Lobby_Blue`. You must perform this procedure for each skin that you wish to use.

Modifying `wwhelp_settings.xml`:

- 1) Open the `wwhelp_settings.xml` file in any text editor.
- 2) Scroll down until you see the following code:

```
<Implementations>
  <JavaScript>
    <Font style="font-family: Verdana, Arial, Helvetica, sans-serif ;
font-size: 8pt" />
    <Indent value="17" />
    <AnchorColors highlight="#CCCCCC" enabled="#315585"
disabled="black" />
```

- 3) Change the `font-size: 8pt` to desired font-size.
- 4) Save the `wwhelp_settings.xml` file.
- 5) Regenerate your project in ePublisher Pro.

Adobe PDF Printer Error

External

Author: Ryan Hammett

Last Modified: October 9, 2006.

ePublisher Pro

The purpose of this article is to explain how to troubleshoot if the message “Unable to create PostScript file” appears in the log file or you receive the following error message:



- 1) For Windows XP users, go to Start > Printers and Faxes. For Windows 2000 users, go to Start > Settings > Printers.
- 2) Check to see if the Acrobat Distiller printer exists.
- 3) If the Acrobat Distiller printer does not exist, reinstall FrameMaker and click Yes when it asks you if you would like to install Acrobat Distiller.
- 4) After the repair is finished, go back to your Printers folder and verify that the Acrobat Distiller printer exists.
- 5) Regenerate your WebWorks ePublisher Pro project.

AltText Work Around

External

Author: Osman Tavilson

Last Modified: July 12, 2006

ePublisher Pro

The purpose of this article is to explain how to make the AltText attribute function correctly.

AltText is a common HTML element in many web pages, but it behaves differently in different browsers. Often, the alt attribute is incorrectly referred to as an image's alt tag. It is not intended to provide "pop up" text or tooltip when a user's mouse hovers over the image, though AltText has been presented in this way in some web browsers; actually HTML's title attribute is intended for supplementary information that can be used in this way.

Internet Explorer passes the AltText attribute alt as a tooltip when a user's mouse hovers over the image and we have many customers who expect this behavior when they are viewed in FireFox. The work around provided below will result in tooltip-style behavior of AltText in FireFox.

Some project modifications cannot be made through the GUI so we have created this article to provide steps for modifying the content.xml file using project target overrides. When you create a project target override you are only overriding the specific file that you want to modify; you are also ensuring that these modifications are not lost when installing updates to ePublisher Pro. For more information on how to perform a project target override, please see "Creating Project Target Overrides".

Note:content.xml file is located by default in: C:\Program Files\WebWorks\ePublisher Pro\Formats\WebWorks Help 5.0\Transforms.

Modifying the content.xml file:

- 1) Open content.xml file in notepad.
- 2) Search for the following code:

```
<xsl:attribute name="alt">  
  
    <xsl:value-of-select="$VarAltText" />  
  
</xsl:attribute>
```

Note:In content.xml this code is declared three times in the content.xml file. The following changes must be applied to each instance to achieve the desired results.

- 3) Please insert the following code below the top code:

```
<xsl:attribute name="title">
```

```
<xsl:value-of-select="$VarAltText" />  
</xsl:attribute>
```

- 4) Please Save your content.xml.
- 5) Close content.xml.
- 6) In ePublisher Pro, select project > Regenerate All.

Assigning Images for Bullets

External

Author: Ryan Hammett

Last Modified: April 26, 2006

ePublisher Pro

The purpose of this article is to explain how to assign images as bullets.

In ePublisher Pro, users can use custom images as bullets in any paragraph style. The steps below will walk you through this process.

Replacing images for bullets:

- 1) In your ePublisher Pro project, select View > User Files.
- 2) Place the image you would like to use as your bullet style in the User Files folder.
- 3) Select View > Style Designer.
- 4) Select the paragraph style that you would like to assign the custom bullet image to.
- 5) Choose Bullet from the list of properties.
- 6) Click on the dropdown button next to the Images property.
- 7) Select a bullet image from the list of available images.
- 8) Close the Style Designer.
- 9) Select Project > Regenerate All.

Creating Thumbnails

External

Author: Osman Tavilson

Last Modified: June 8, 2006

ePublisher Pro

The purpose of this article is to explain how to create thumbnails.

This article will show you how to create thumbnails in WebWorks ePublisher Pro.

Creating Thumbnails

- 1) In ePublisher Pro, select **View > Style Designer**.
- 2) Select the Graphic Styles tab.
- 3) From the list of graphic styles, select **Default**.
- 4) Select the Options tab.
- 5) Find the option Thumbnail threshold height.
- 6) Do one of the following:
 - a) Click on the dropdown button next in the value field to enable the dropdown menu, and select a value from the list.
 - b) Click inside the value field, and type in the value you would like to use.

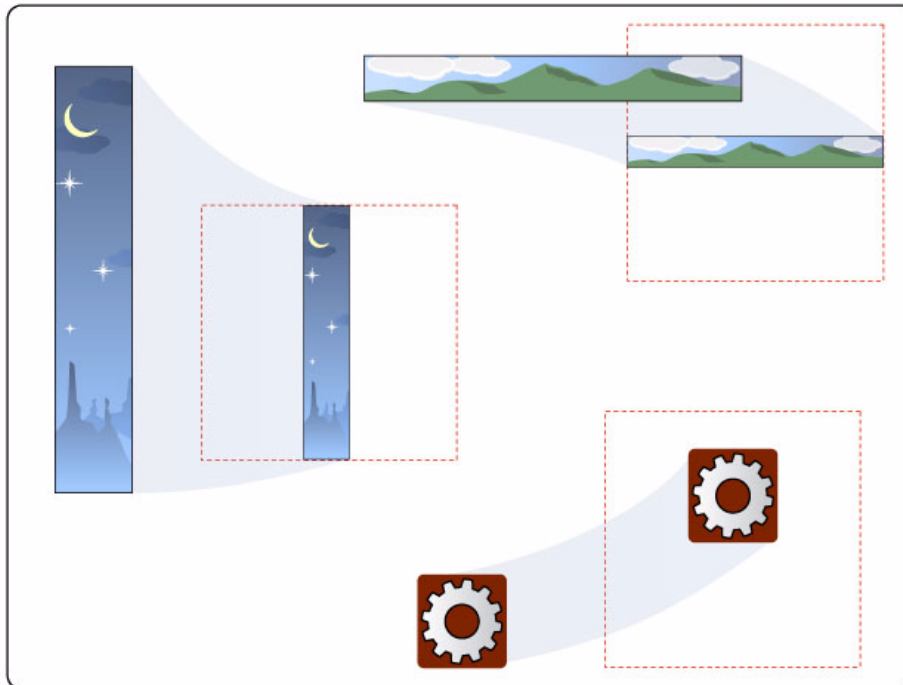
Note:We recommend using 100 or higher.

- 7) Find the option Thumbnail threshold width.
- 8) Do one of the following:
 - a) Click on the dropdown button next in the value field to enable the dropdown menu, and select a value from the list.
 - b) Click inside the value field, and type in the value you would like to use.

Note:We recommend using 100 or higher.

Threshold height and width draws an image box 100 by 100 and makes your image to fit inside of this box. It doesn't stretch your diagonal or small images to fit into this box. This feature makes all of your images appear no larger than the specified size.

This is how threshold image works in ePublisher Pro:



- 9) If you have created a page style for your thumbnails, find the option Thumbnail Page Style. If you don't have a page style for your thumbnails, proceed to step 12.
- 10) Click on the dropdown button in the value field to enable the dropdown menu. A list of available page styles will display.
- 11) Select a page style from the dropdown list.
- 12) Close the Style Designer.
- 13) Select **Project > Regenerate All**.

Windows and Dialogs are Not Sized Correctly

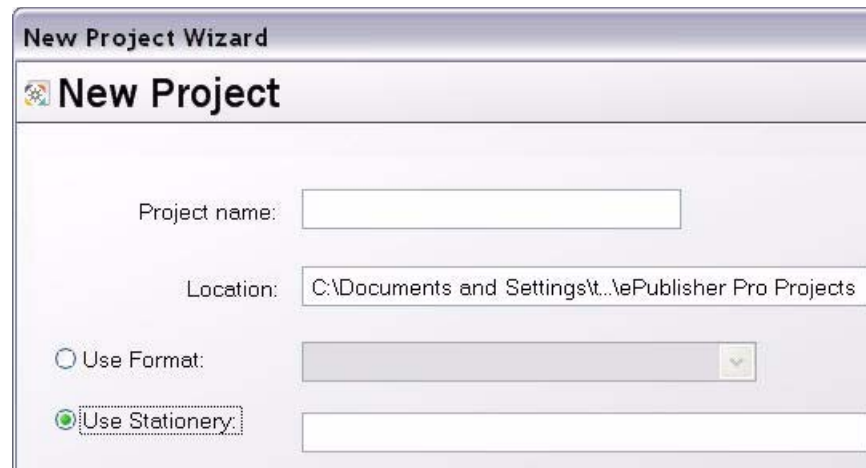
External

Last Modified: October 11, 2006

WebWorks ePublisher Pro

The purpose of this article is to resolve the issue behind the display of select dialog boxes within ePublisher Pro.

In ePublisher Pro, users can run into problems if their desktop is set too high (e.g., 120DPI). Often, this results in the improper display of dialogs like the splash screen and the new project dialogs, hiding specific aspects on those boxes, rendering them useless.



Note:When you try to create a new project you wont be able to use stationary with DPI setting set to Large Size (120 DPI).



Note: This is what your About ePublisher Pro image will look like if your DPI setting is set to Large Size (120 DPI).

To Change DPI settings in Windows:

- 1) Open Control Panel > Display.
- 2) From Display Properties select Settings.
- 3) Choose Advanced and Select General.
- 4) In Display change the DPI Setting to Normal size (96 DPI).
- 5) Click OK to apply the new setting.

Embedding Media Files

External

Author: Osman Tavilson

Last Modified: June 22, 2006

ePublisher Pro

The purpose of this article is to explain how to embed media files into a WebWorks Help 5.0, Dynamic HTML, Microsoft HTML Help 1.x, and Simple HTML Help systems.

In the following article, we will show you how to embed the proper code into the source document and how to set up your ePublisher Pro project to then use that markup successfully when generating output.

Embedding Conditional Markup in the Source File

In the following steps, we will be inserting code into the source document using conditional text. This code can be processed by ePublisher Pro to be emitted in the HTML of the resulting output, producing an embedded media file.

For Adobe FrameMaker:

- 1) In the source document, place the insertion point where you want the embedded media file to appear.
- 2) Insert the `<embed></embed>` code at the insertion point. An example of this usage is:

```
<embed src="sample.swf" width="400" height="300" pluginspage=" http://  
www.macromedia.com/shockwave/download/  
index.cgi?Pl_Prod_Version=ShockwaveFlash" ;>  
</embed>
```

- 3) Select and highlight this code.
- 4) **Special > Conditional Text...**
- 5) Click the **Edit Condition Tag...** button
- 6) In the Tag field, type the name of your Condition. In this example we are going to name our tag Media.
- 7) Set your Condition Indicators (these are just visible formatting rules that enable you to see the conditional text in the Framemaker document).
- 8) Click the **Set** button to close the Edit Condition Tag dialog.
- 9) You will see Media is not listed in the 'Not in' list. Double-click Media.

- 10) Click **Apply**.
- 11) Save the source document.

For Microsoft Word:

- 1) In the source document place the insertion point where you want the embedded media file to appear.
- 2) Insert the `<embed></embed>` code at the insertion point. An example of this usage is:

```
<embed src="sample.avi" width="400" height="300" pluginspage=";">
</embed>
```

Note: In order to embed a video file into Microsoft HTML Help 1.x system please use the code below:

```

```

- 3) Select this code in the sourcedocument and apply your condition.
 - 4) Select **Webworks > Conditions**.
 - 5) Click the **Add Condition** button to open the Create New Condition dialog and click **OK**.
 - 6) Name your condition by entering the name and click **OK**.
- Note: In this example we are going to name our tag "Media".
- 7) From Configure Conditions list find the condition you just created.
 - 8) Click the **Apply Condition** button and then click OK to close the dialog.
 - 9) Save the source document.

Setting up your ePublisher Pro Project

After you have placed the code and conditions in your source document you must set up your ePublisher Pro project to process the code properly.

- 1) Open your WebWorks ePublisher Pro project.
- 2) Select **View > User Files**.
- 3) Copy your media file(s) in this location.
Note: Media Files cannot be embedded unless they are included in the 'Files' folder.
- 4) Close Files folder.
- 5) Select **Project > Scan All Documents** to scan in your new conditions.
- 6) Select **Format > Conditions**.
- 7) From the Conditions tab, find the name of the condition(s). In our example, the condition name is Media.
- 8) Verify that Visible and Pass Through are selected.

- 9) Click **OK**.
- 10) Select **Project > Generate All**.

Starting JavaHelp and JDK

External

Author: Osman Tavilson

Last Modified: March 28, 2006

ePublisher Pro

The purpose of this article is to explain how to set up your project and your system for creating a JavaHelp system.

In order to create a JavaHelp system, we recommend having the latest JDK installed on your machine. The JDK is offered as part of the Java Platform, Standard Edition (Java SE). The link above takes you to the Java SE (previously known as J2SE) download page, from which you can obtain the current JDK. Installation instructions and documentation is available at this link. <http://java.sun.com/javase/downloads/index.html>.

After Downloading the J2SE(TM) Development Kit 5.0 Update 6 to your machine please be sure to do following:

- 1) Open your WebWorks ePublisher project. Ensure JavaHelp is the active target for the project.
- 2) Go to Project > Format Settings.
- 3) Find JavaHelp Location setting. Enter the location of the JavaHelp installation
 - The default Location for JavaHelp 1.1.3 will be C:\Program Files\WebWorks\ePublisher Pro\Helpers\javahelp1.1.3\javahelp\bin
 - The default Location for JavaHelp 2.0 will be C:\Program Files\WebWorks\ePublisher Pro\Helpers\javahelp2.0\javahelp\bin
- 4) Find JDK location setting. Enter the location of the JDK installation. The default location for JDK installations can be one of two places. If your hard drive is the C:\, then the installation can be placed at C:\Program Files\Java\[JDKInstallation] or C:\[JDKInstallation]. Where JDK Installation is named for the version of the JDK that you have installed.

Opening an External File Link in a New Window

External

Author: Osman Tavilson

Last Modified: July 6, 2006

ePublisher Pro

The purpose of this article is to explain how to open your links to external files in a new browser window.

Some project modifications cannot be made through the GUI so we have created this article to provide steps for modifying the content.xml file using project target overrides. For more information on how to perform a project target override, please see ““Creating Project Target Overrides””.

Note:content.xml file is located by default in: C:\Program Files\WebWorks\ePublisher Pro\Formats\[FORMAT]\Transforms. Where [FORMAT] is the format from which you have based the target being generated.

Modifying the content.xml file

- 1) Open the new content.xml file in the project directory with the text editor of your choice.
- 2) Copy this code:

```
<xsl:variable name="VarTarget"
select="wwproje:GetFormatSetting('external-url-target', '_window')" />
<xsl:if test="(string-length($VarTarget) > 0) and ($VarTarget !=
'none')">
    <xsl:attribute name="target">
        <xsl:value-of select="$VarTarget" />
    </xsl:attribute>
</xsl:if>
```

- 3) Search for the comment, <!-- Baggage -->.
- 4) Paste the code in between the following code, located under <!-- Baggage -->

```
</xsl:attribute>
----->
</xsl:when>
```

- 5) Save content.xml file and close it.
- 6) In your ePublisher Pro project, select Project > Regenerate All.

Modifying Breadcrumbs

External

Author: Ryan Hammett

Last Modified: October 9, 2006

ePublisher Pro

The purpose of this article is to explain how to modify breadcrumbs using project target overrides for changes to an ePublisher Pro project that are not available through the GUI.

Some project modifications cannot be made through the GUI so we have created this article to provide steps for modifying breadcrumbs using project target overrides. When you create a project target override you are only overriding the specific file that you want to modify; you are also ensuring that these modifications are not lost when installing updates to ePublisher Pro.

- 1) Create a project target override by following the steps in "Creating Project Target Overrides"
- 2) The file that you have just copied will be the file to which you will make your modifications.

Note:It is not necessary to copy any files into the project `Targets` directory that you are not explicitly overriding.

- 3) You can open the `webworks.css` file in a text editor, such as Notepad, locate the Breadcrumbs css classes `WebWorks_Breadcrumbs` and `WebWorks_Breadcrumb_Link`, and modify the CSS style information to reflect the style you want.
- 4) After you have made all modifications you want to make, save the file and the next time you **Generate All** in your ePublisher Pro project, this file will be used in place of the default file (thus overriding it), and the changes you made will be incorporated into the output.

Note:If you save the ePublisher Pro project as stationery, the project target overrides you have created will be saved in your stationery.This stationery can then be used to create future projects, while maintaining these modifications throughout your future projects.

Modifying the Appearance of Multiple Hyperlinks

External

Author: Adam Goldberg

Last Modified: July 6 2006.

ePublisher Pro

The purpose of this article is to explain how to modify the appearance of multiple hyperlinks.

Currently, there is not a way through the UI to control the appearances of multiple hyperlinks. In other words, users often want the appearance of their hyperlinks to be different depending on the type of hyperlink it is (external, glossary, popup, file, etc.), and there is not a way to do this through the UI. We are looking at adding this capability in the future. For now, customers will need to use this workaround.

The workaround is to apply unique character styles to the hyperlinks and then create a project target override on the **webworks.css** file and add the desired CSS style information. For more information on how to create a project target override, please see ““Creating Project Target Overrides””.

Note:By default the webworks.css file lies in C:\Program Files\WebWorks\ePublisher Pro\Formats\[FORMAT]\Pages\css. Where [FORMAT] is the format from which the target to be generated is based.

Example

Suppose you have a hyperlink in your source document with a character style applied to it called `MyHyperlinkCharacterStyle` and you want the link to appear green with no underline in output.

In the webworks.css file you would add the following:

```
.MyHyperlinkCharacterStyle a:link{  
  
color: green;  
  
text-decoration: none;  
  
}  
  
.MyHyperlinkCharacterStyle a:visited{  
  
color: green;  
  
text-decoration: none;  
  
}
```

```
.MyHyperlinkCharacterStyle a:hover{  
  
color: purple;  
  
text-decoration: none;  
  
}  
  
.MyHyperlinkCharacterStyle a:active {  
  
color: green;  
  
text-decoration: none;  
  
}
```

Note: There are four CSS states for links: **link**, **active**, **visited** and **hover**. The **link** state indicates a link that has not been used nor is there a mouse pointer hovering over it. The **active** state indicates a link is in the process of being clicked. The **visited** state indicates a link has been used and there is not a mouse pointer hovering over it. The **hover** state indicates a mouse pointer is hovering over a link.

Once you are finished modifying the CSS information, save and close the webworks.css file and regenerate your project. If you would like to see an example project, you may download it [here](#).

Modifying Page.Asp

External

Author: Ryan Hammett

Last Modified: October 9, 2006

ePublisher Pro

The purpose of this article is to explain how to modify the Page.asp file using project target overrides for changes to an ePublisher Pro project that are not available through the GUI.

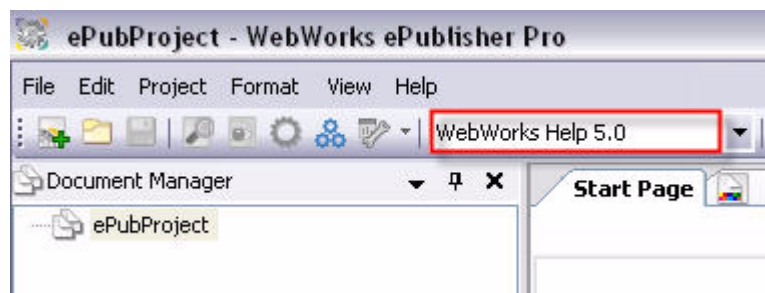
Some project modifications cannot be made through the GUI so we have created this article to provide steps for modifying the Page.asp file using project target overrides. When you create a project format override you are only overriding the specific file that you want to modify; you are also ensuring that these modifications are not lost when installing updates to ePublisher Pro.

Instructions for creating project target overrides

- 1) Select the existing format target from your project.

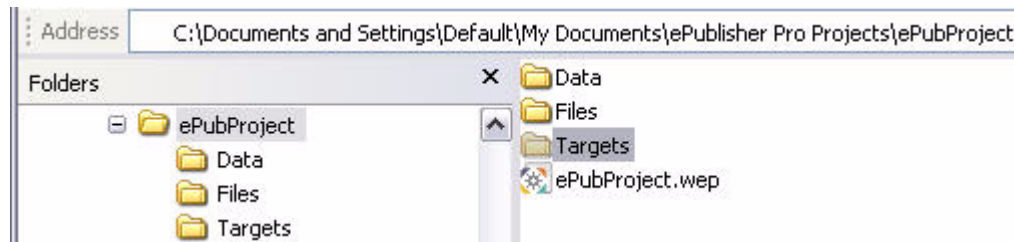
For example, if you chose **WebWorks Help 5.0** as the format when creating this project you will already have a target that, by default, is named WebWorks Help 5.0.

Figure 1 WebWorks Help 5.0 is the Active Format Target shown below



- 2) Open your existing ePublisher Pro project if it is not already open.
- 3) Go to **View > User Files**.
- 4) Navigate up one level to the same directory where your **.wep** ePublisher Pro project file is located.
- 5) Create a new folder named **Targets**.

Note: The directories ePublisher Pro looks for are case-sensitive. Be sure to type the folder names exactly the way they are typed in the installation directory structure.



- 6) Open the **Targets** directory you just created.
- 7) Create a new folder and assign it the name of the **Active Format Target** in your project. See Figure 1
- 8) Open the WebWorks Help 5.0 directory you just created. Leave this window open.
- 9) Open a new explorer window and navigate to the **Formats** folder located in the ePublisher Pro installation directory. By default, it is located in C:\Program Files\WebWorks\ePublisher Pro\Formats.
- 10) Within the **Formats** directory, open the directory of the format from which you have based the target, chosen in step 1.

For example, if the target you are creating overrides for is based on the **WebWorks Help 5.0** format, you should open the **WebWorks Help 5.0** directory in **Formats**.

- 11) Navigate to page.asp, select it, right-click and choose Copy to copy the file.
- 12) Within the **Targets** directory that you created in step 5, recreate the directory path that leads to the file you copied in step 11. Then paste the copied file here.

For this example, since you are overriding the page.asp file for your new format target based on the **WebWorks Help 5.0** format, you would create within your new **Targets** directory a new folder called **Pages**, and paste the file here.

Page.asp

- 1) In the steps above you will have copied and pasted Page.asp into your project directory and will be making the modifications to this file.

Note: It is not necessary to copy any files into the project **Targets** directory that you are not explicitly overriding.

- 2) After you have made the modifications you want to make to the file in your project directory, save the file and the next time you **Generate All** in your ePublisher Pro project, this file will replace the default file (thus overriding it), and the changes you made will be incorporated into the output.
- 3) When you save the ePublisher Pro project as stationery, the project target overrides you have created will be saved in your stationery.

This stationery can then be used to create future projects, while maintaining these modifications throughout your future projects.

No Valid License Key Found to Enable Support

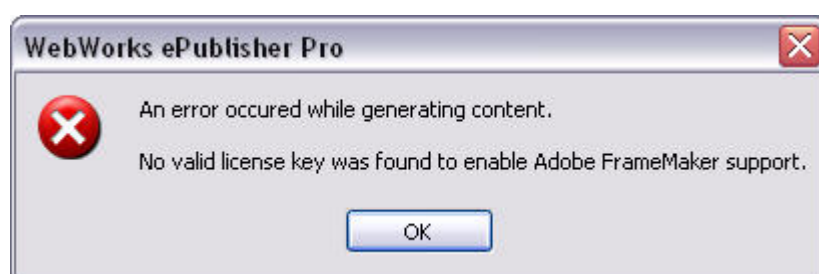
External

Author: Ryan Hammett

Last Modified: October 4, 2005

ePublisher Pro

This article describes how to fix the “No valid license key found to enable Adobe FrameMaker (or Microsoft Word) support” error.



If you receive either of the following errors: “No valid license key found to enable Adobe FrameMaker support” or “No valid license key found to enable Microsoft Word support”, this means you have an old or invalid key in the **License Key** field, or you have not entered the correct ePublisher Pro key to activate the product for Word or FrameMaker.

Please follow these instructions to enter a valid license key:

- 1) First, delete any existing license keys that appear in the **License Information** field.
- 2) Open WebWorks ePublisher Pro, and select **Help > License Keys....**
- 3) Enter your license key into the **License Key** field. Do not enter any extra spaces, and make sure there is not a space preceding the license key in the **License Key** field.

Note: Separate keys are required to activate ePublisher Pro for Word and for FrameMaker files.

- 4) Press the **Add Key** button.
- 5) Press **OK**.

Creating Project Target Overrides

External

Author: Amanda Wagner

Last Modified: October 9, 2006

ePublisher Pro

The purpose of this article is to explain how to create project target overrides for changes to an ePublisher Pro project that are not available through the GUI.

Some project modifications cannot be made through the GUI so we have created this article to provide steps for creating these project target overrides. Examples of modifications that cannot be made through the UI are [changing the splash page](#) to a WebWorks Help system, [TOC font size adjustment](#) to your project for localization purposes, and modifying style properties for [breadcrumbs](#) and mini-TOCs. When you create a project target override you are only overriding the specific file that you want to modify; you are also ensuring that these modifications are not lost when installing updates to ePublisher Pro.

This article offers general steps for performing target overrides. These steps may be taken with any of the files you need to modify inside the Formats directory. Please note however that changes to XSL and FTI files are not supported through our Product Support department. Modification of these files will only be supported through our Services department.

Instructions for creating project target overrides

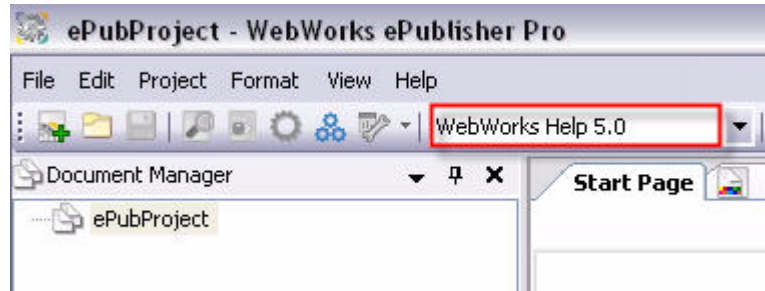
To create a target override, we will first choose an existing format target in our project. Next, we will create a directory structure that mirrors the directory path to the file that we will be overriding.

Please follow these instructions to create target overrides:

- 1) Select the existing format target from your project.

For example, if you chose **WebWorks Help 5.0** as the format when creating this project you will already have a target that, by default, is named WebWorks Help 5.0.

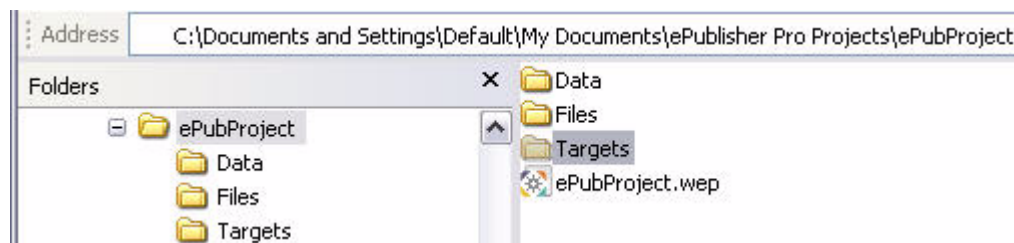
Figure 1 WebWorks Help 5.0 is the Active Format Target iseen below.



Next, we will create a new **Targets** directory in our ePublisher project directory.

- 2) Open your existing ePublisher Pro project if it is not already open.
- 3) Go to **View > User Files**.
- 4) Navigate up one level to the same directory where your **.wep** ePublisher Pro project file is located.
- 5) Create a new folder named **Targets**.

Note: The directories ePublisher Pro looks for are case-sensitive. Be sure to type the folder names exactly the way they are typed in the installation directory structure.

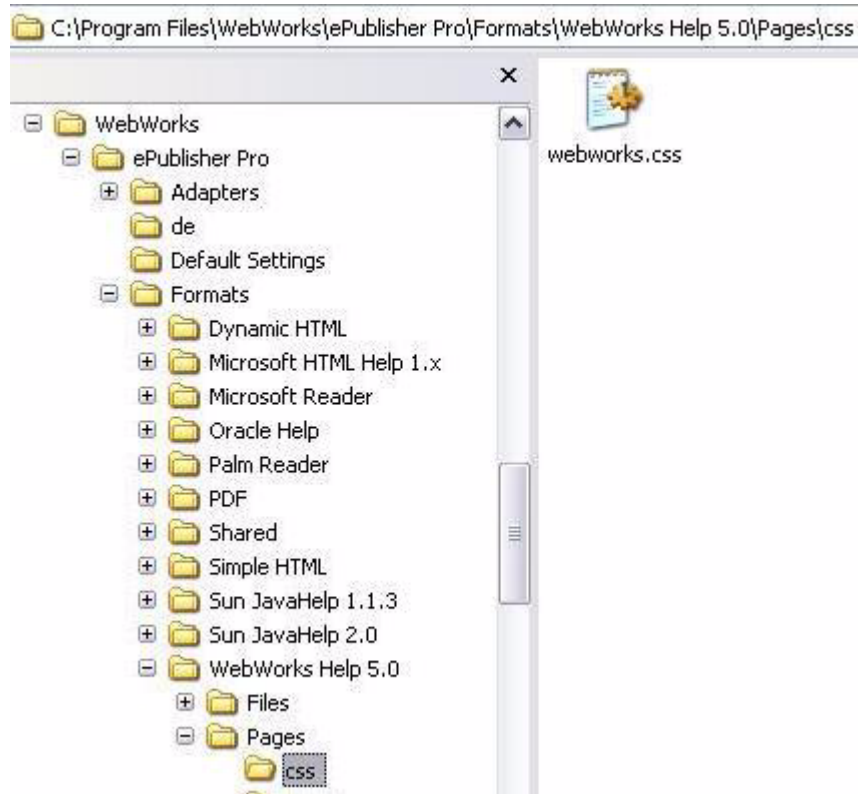


- 6) Open the **Targets** directory you just created.
- 7) Create a new folder and assign it the name of the **Active Format Target** you have selected in your project. See Figure 1
- 8) Open the directory you just created. Leave this window open.
- 9) Open a new window and navigate to the **Formats** folder located in the directory where you installed WebWorks ePublisher Pro. By default, it is located in `C:\Program Files\WebWorks\ePublisher Pro\Formats`.
- 10) Within the **Formats** directory, open the directory of the format on which you have based the format target, chosen in step 1.

For example, if the target you are creating overrides for is based on the **WebWorks Help 5.0** format, you should open the **WebWorks Help 5.0** directory in **Formats**.

- 11) Navigate to the file you need to override, select it, right-click and choose Copy to copy the file.

For our example format target (which is based on the **WebWorks Help 5.0** format), if you want to override the `webworks.css` file, you would open the `Pages > css` directory and copy the `webworks.css` file. The default installation path to `webworks.css` would be: `C:\Program Files\WebWorks\ePublisher Pro\Formats\WebWorks Help 5.0\Pages\css`



- 12) Within the **Targets** directory that you created in step 5, recreate the directory path that leads to the file you copied in step 11. Then paste the copied file here.

For this example, since you are overriding the `webworks.css` file for your new format target based on the **WebWorks Help 5.0** format, you would create within your new **Targets** directory a new folder called **Pages**, and within that another directory called **css**.

Note: If the file you need to override is located in the "Shared" directory, then you should recreate this folder inside the one named for your active target. For example, you might have a hierarchy in your project folder like this:

```
Targets\WebWorks Help 5.0\Shared\common\locale\locales.xml
```

- 13) The file you have just pasted will be the file that you will make your modifications to.

Note: It is not necessary to copy any files into the project **Targets** directory that you are not explicitly overriding.

- 14) After you have made the modifications you want to make to the file in your project directory, save the file and the next time you **Generate All** in your ePublisher Pro project, this file will replace the default file (thus overriding it), and the changes you made will be incorporated into the output.

- 15) When you save the ePublisher Pro project as stationery, the project target overrides you have created will be saved in your stationery.

This stationery can then be used to create future projects, while maintaining these modifications throughout your future projects.

Troubleshooting the Pipeline Splits Error

External

Author: Ryan Hammett

Last Modified: May 8th, 2006

ePublisher Pro

The purpose of this article to help troubleshoot when receiving the message:

[Error] An error occurred in pipeline 'Splits' while processing stage transform 'wwtransform:common/splits/names.xml'.

[Error] Function 'wwfilesystem:Combine()' has failed.

[Error] Exception has been thrown by the target of an invocation.

[Error] The given path's format is not supported.

If you are receiving this error message, then you have probably used a special character in your filename markers. You will need to open your document and check all your filename markers to ensure that there are no special characters.

Note:Special characters include: \ / : * ? " < > |

For example, if you had a filename marker that had the marker text `myoutput :`
`myfilename` you would receive the error message. This is because you cannot have special characters in file paths. In this example, you would need to remove the colon and have the marker text `read myoutput_myfilename` OR `myoutput myfilename`.