

Changing WebWorks Help 5.0 Colors and Buttons

External

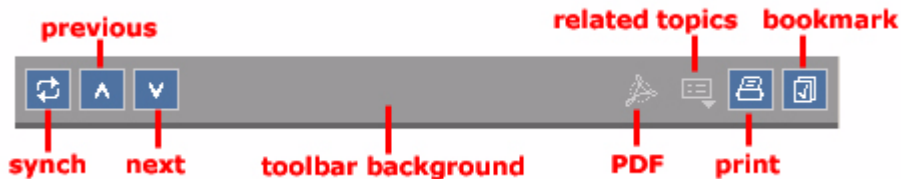
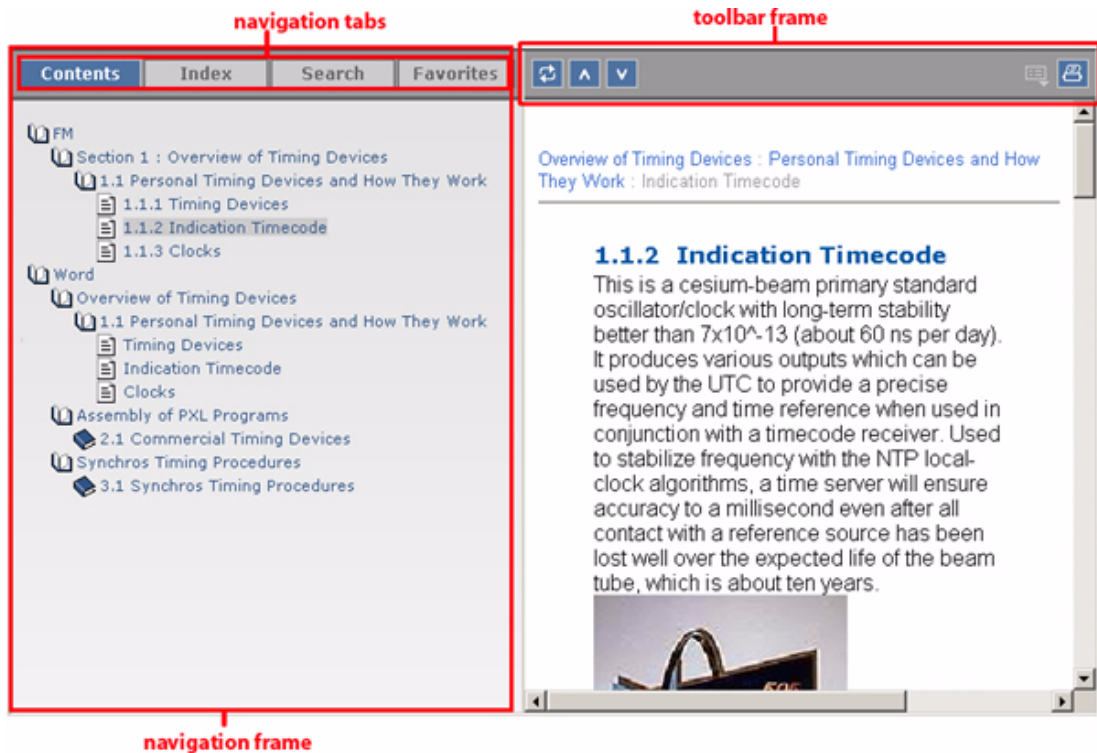
Author: Amanda Wagner

Last Modified: July 12, 2006

ePublisher Pro

This article provides steps to change colors and replace buttons for WebWorks Help 5.0.

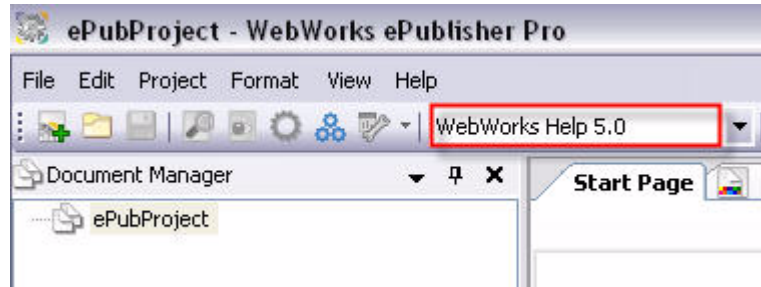
You can modify the WebWorks Help 5.0 Classic theme to change the colors of the toolbar frame and toolbar buttons, navigation frame and navigation tabs, and the text color and font of the content in the navigation frame.



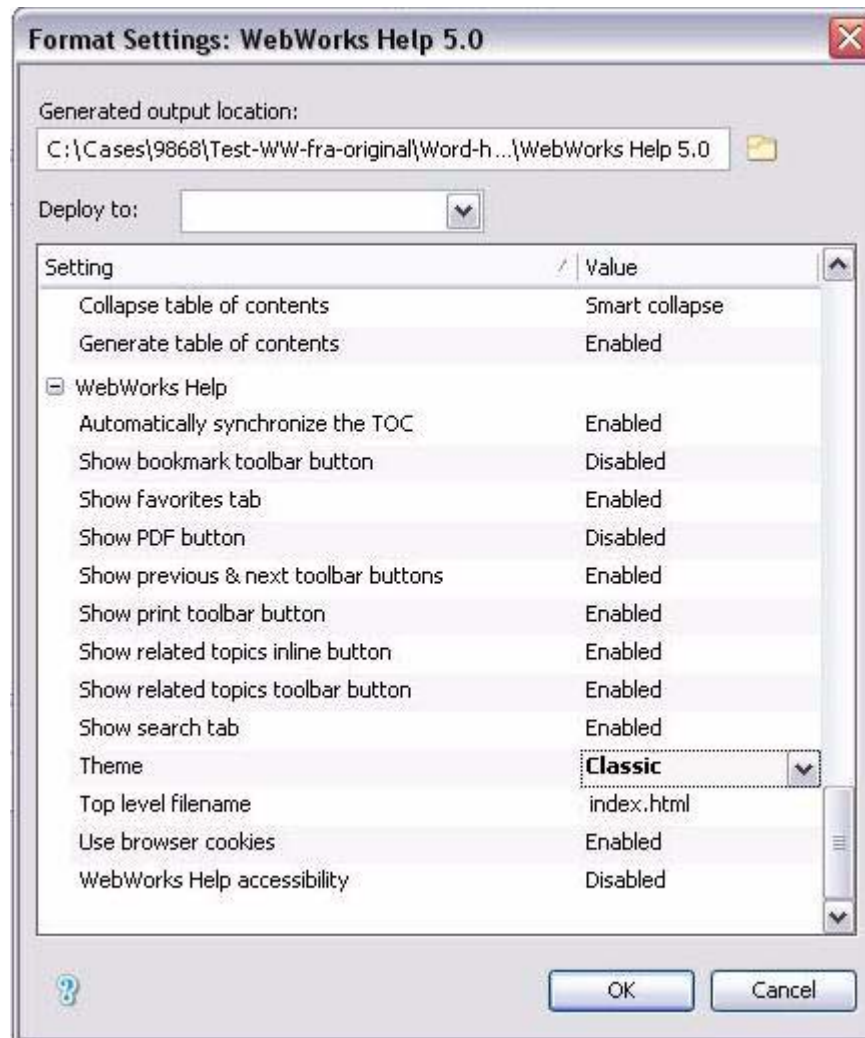
Section 1: Getting Started

The following are required before beginning the steps:

- 1) You should have an ePublisher Pro Project or format target based on the **WebWorks Help 5.0** format. If you do not have a **WebWorks Help 5.0**-based format target, create a new one in **Project > Manage Format Targets**. Make sure this target is selected as your **Active Format Target**:



- 2) Select the “Classic” Theme in your Project Format Settings (**Format > Format Settings**).



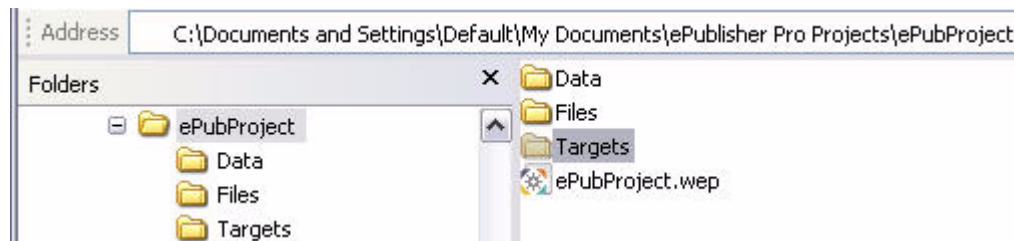
- 3) Press OK.

Section 2: Creating a Project Target Override

Next, you will perform a Project Format Override, to override the default images which make up the **WebWorks Help Classic** theme, and replace them with your new images.

For detailed information about Project Format Overrides, please see the knowledge base article, “Creating Project Target Overrides”.

- 1) In ePublisher Pro, choose **View > User Files**.
- 2) Navigate up one level; this directory should contain the .wep file and the Files, Data, Logs, and Output folders.
- 3) Create a new folder.
- 4) Name the folder **Targets**.

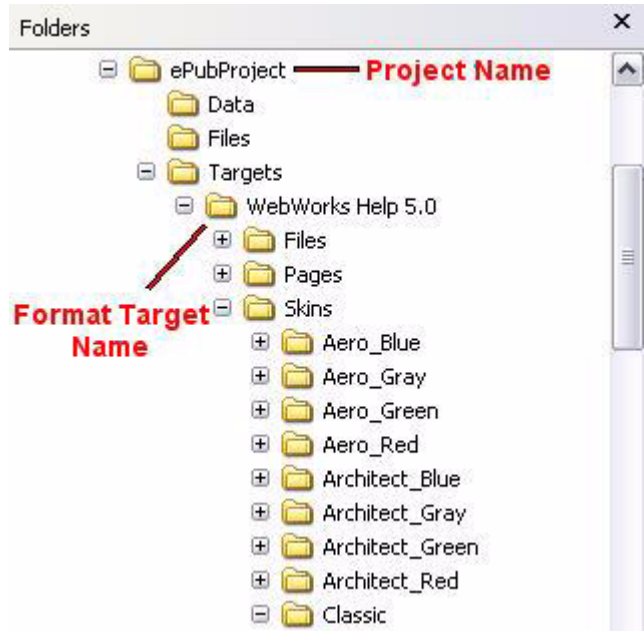


- 5) Open the **Targets** folder, and within the **Targets** folder, create a new folder.
- 6) Create a new folder and assign it the name of the format target you have selected in your project (by default, the format target will be WebWorks Help 5.0).

Note: Folder names in a Target override are case-sensitive.

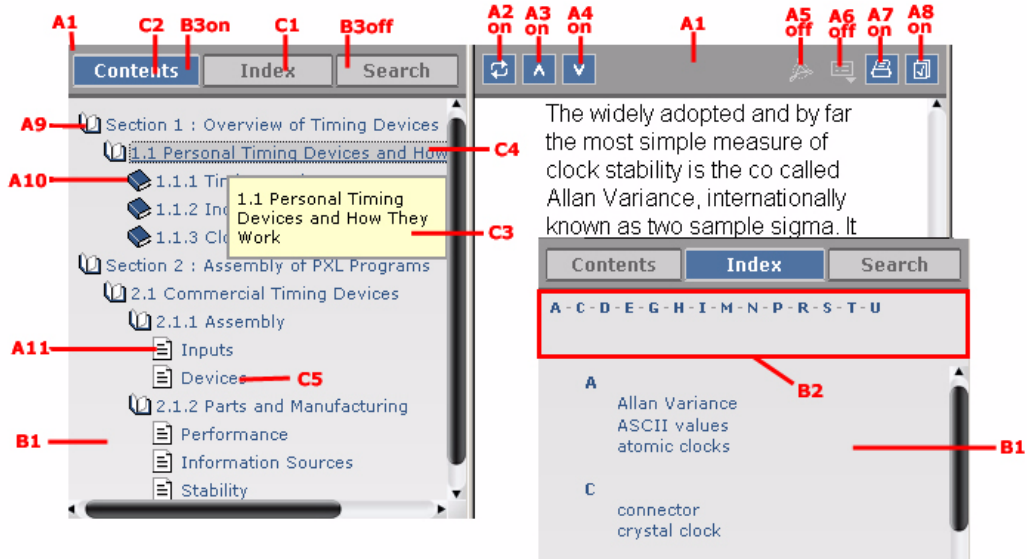
- 7) Open this format target folder (e.g. WebWorks Help 5.0). Leave this window open.
- 8) Download the attached file, [Skins.zip](#), and save it into the format target folder. Right-click on “Skins.zip” and choose “Extract to folder” using a zip program such as WinZip. After unzipping the file, you should have a folder in that directory called “Skins”.

Note: The image below depicts what the file hierarchy would look like expanded in Windows Explorer for a project named “WWHelp_Classic” and a Format Target named WebWorks Help 5.0.



Section 3: Identifying and modifying areas of the WebWorks Help interface

Using the image and the corresponding table below locate the letter/number combinations to identify the areas of the WebWorks Help 5.0 Classic interface you want to modify and the corresponding files to be modified. All these files are located in the Skins folder you have unzipped.



WebWorks Help Area	Corresponding file
A1 - toolbar background	toolsbg.gif
A2 - synchronize TOC button	sync.gif (active state), syncx.gif (inactive state)
A3 - previous topic button	prev.gif (active state), prevx.gif (inactive state)
A4 - next topic button	next.gif (active state), nextx.gif (inactive state)
A5 - PDF button	pdf.gif (active state), pdfx.gif (inactive state)
A6 - related topics button	related topics button - related.gif (active state), relatedx.gif (inactive state), relatedi.gif (inline icon that appears in the content pane)
A7 - print button	print.gif (active state), printx.gif (inactive state)
A8 - bookmark button	bkmark.gif (active state), bkmarkx.gif (inactive state)
A9 - open book Contents icon	fo.gif
A10 - closed book Contents icon	fc.gif
A11 - page Contents icon	doc.gif
B1 - navigation pane background	viewbg.gif
B2 - numerics/Search background	navbg.gif
B3 - Index, Search, Contents, and Favorites tab background	btn_bg.gif (active state), btnx_bg.gif (inactive state)
C1 - Inactive state of all the tabs. Represented by the <DefaultColors> tag.	wwhelp_settings.xml

WebWorks Help Area	Corresponding file
<p>C2 - Active state of all the tabs. Represented by the <SelectedColors> tag.</p>	<p>wwhelp_settings.xml</p>
<p>C3 - HoverText popup. Represented by the <HoverText> tag, which affects the background, foreground and border colors of hovertext popups.</p>	<p>wwhelp_settings.xml</p>
<p>C4 - Highlight color for navigation pane links. Represented by the <AnchorColors> tag, which affects global font properties for anchors and anchor highlighting for navigation pane entries.</p>	<p>wwhelp_settings.xml</p>
<p>C5 - Link Color for navigation pane links. Represented by the <AnchorColors> tag.</p>	<p>wwhelp_settings.xml</p>

Locate area A1-A11 images (toolsbg.gif, sync.gif, syncx.gif, prev.gif, prevx.gif, next.gif, nextx.gif, pdf.gif, pdfx.gif, related.gif, relatedx.gif, relatedi.gif, print.gif, printx.gif, print.gif, bkmark.gif, bkmarkx.gif, fo.gif, fc.gif, doc.gif) in the following folder:

\\Skins\\Classic\\Files\\wwhelp\\wwhimpl\\common\\images

Locate area B1-B3 images (viewbg.gif, navbg.gif, btn_bg.gif, btnx_bg.gif) in the following folder:

\\Skins\\Classic\\Files\\wwhelp\\wwhimpl\\js\\images

1) After locating the images, open the ones you want to modify in an image editing program such as Photoshop or Microsoft Paint.

2) Change the colors of the images you want to modify

Note:Do not resize the images.

3) Save the images to replace the default images.

Note:The images are .gif, so do not change the image format to .jpg or another image format. Save the image with the exact same name and in the same directory as the default image you are replacing.

4) Areas C1-C5 are controlled by the `wwhelp_settings.xml` file. With a text editor such as Notepad, open the `wwhelp_settings.xml` file located in the following folder:

`Skins\\Classic\\wwhelp_settings.xml`

5) Locate the portion of code that corresponds to the WebWorks Help Classic area you want to modify

6) Replace the color HEX values with the color HEX values you want to use.

There are many online resources that will help if you do not know what color HEX values you want. Here is one resource:

http://hotwired.lycos.com/webmonkey/reference/color_codes/

Areas C1 and C2 (described in the image and table above)

```
<Tabs>
  <DefaultColors foreground="#666666" /> <!-- C1 -->
  <SelectedColors foreground="#FFFFFF" /> <!-- C2 -->
</Tabs>
```

Area C3 (described in the image and table above)

```
<HoverText enable="true">
  <Font style="font-family: Verdana, Arial, Helvetica,
  sans-serif ; font-size: 8pt" />
  <Colors foreground="#000000" background="#FFFFCC"
  border="#999999" />
  <Size width="150" />
</HoverText>
```

Areas C4 and C5 (described in the image and table above)

The AnchorColors HEX value for **highlight** controls the highlight color of the selected entry; the **enabled** value controls the link color; the **disabled** value controls the color of entries that do not link to anything.

```
<JavaScript>
  <Font style="font-family: Verdana, Arial, Helvetica, sans-serif ;
font-size: 8pt" />
  <Indent value="17" />
  <AnchorColors highlight="#CCCCCC" enabled="#315585" disabled="black" /
>
```

Note: The rest of the Implementations section is for overriding the global font settings specified in the code block above, for each content pane (**Contents**, **Index**, **Search** and **Favorites** tabs) individually.

- 7) Save **wwhelp_settings.xml**.
- 8) Regenerate the project (**Project > Regenerate All**).

Creating a Custom Theme for WebWorks Help 5.0

External

Author: Adam Goldberg

Last Modified: October 12, 2006

ePublisher Pro

The purpose of this article is to describe how to create a custom WebWorks Help 5.0 theme by adjusting the color of the images used to build this output format.

Several different themes are offered by ePublisher Pro, but if none of the color schemes suits your needs, you can modify an existing theme to get the look you require. You'll want to follow these steps:




- 1) "Create a New Theme" on page 1
- 2) "Modify the Theme's Images" on page 4
- 3) "Apply the Changes to Your Project" on page 5

Create a New Theme

A theme controls the colors, fonts, and buttons of a WebWorks Help 5.0 layout, so the first step is to copy the necessary files from an existing theme.

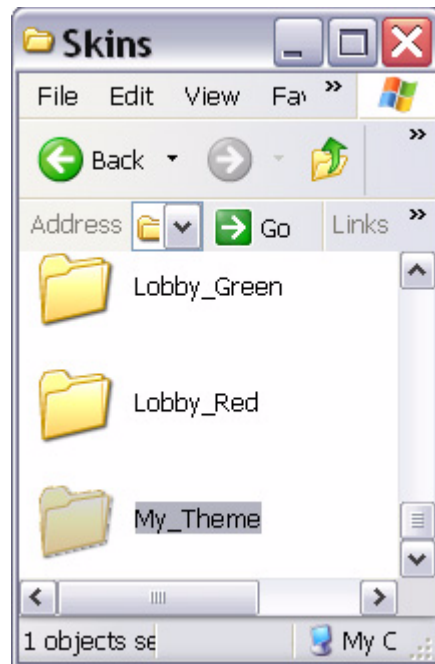
- 1) In your ePublisher Pro installation directory, navigate to the following folder:
ePublisher Pro\Formats\WebWorks Help 5.0\Skins\
- 2) Select the theme for which you'd like to change the colors and/or buttons. To give you a starting point, the theme layouts installed with ePublisher Pro are:



<p>Aero</p>	 <p>The screenshot shows a content menu in the Aero theme. The menu is displayed in a light blue, semi-transparent box. At the top, there are four tabs: 'Contents' (selected), 'Index', 'Search', and 'Favorites'. To the right of the tabs are navigation icons: a refresh icon, a left arrow, and a right arrow. The menu items are as follows:</p> <ul style="list-style-type: none"> Section 1 : Overview of Timing Devices <ul style="list-style-type: none"> 1.1 Personal Timing Devices and How They Work <ul style="list-style-type: none"> 1.1.1 Timing Devices 1.1.2 Indication Timecode 1.1.3 Clocks 1.1.4 Test heading 2 Section 2 : Assembly of PXL Programs
<p>Architect</p>	 <p>The screenshot shows a content menu in the Architect theme. The menu is displayed in a light gray, semi-transparent box. At the top, there are four tabs: 'Contents' (selected), 'Index', 'Search', and 'Favorites'. To the right of the tabs are navigation icons: a refresh icon, a left arrow, and a right arrow. The menu items are as follows:</p> <ul style="list-style-type: none"> Section 1 : Overview of Timing Devices <ul style="list-style-type: none"> 1.1 Personal Timing Devices and How They Work <ul style="list-style-type: none"> 1.1.1 Timing Devices 1.1.2 Indication Timecode 1.1.3 Clocks 1.1.4 Test heading 2 Section 2 : Assembly of PXL Programs
<p>Freeform</p>	 <p>The screenshot shows a content menu in the Freeform theme. The menu is displayed in a dark blue, semi-transparent box. At the top, there are four tabs: 'Contents' (selected), 'Index', 'Search', and 'Favorites'. To the right of the tabs are navigation icons: a refresh icon, a left arrow, and a right arrow. The menu items are as follows:</p> <ul style="list-style-type: none"> Section 1 : Overview of Timing Devices <ul style="list-style-type: none"> 1.1 Personal Timing Devices and How They Work <ul style="list-style-type: none"> 1.1.1 Timing Devices 1.1.2 Indication Timecode 1.1.3 Clocks 1.1.4 Test heading 2 Section 2 : Assembly of PXL Programs

Lobby Blue	<p>Contents Index Search Favorites   </p>
	<ul style="list-style-type: none"> Section 1 : Overview of Timing Devices<ul style="list-style-type: none"> 1.1 Personal Timing Devices and How They Work<ul style="list-style-type: none"> 1.1.1 Timing Devices 1.1.2 Indication Timecode 1.1.3 Clocks 1.1.4 Test heading 2 Section 2 : Assembly of PXL Programs<ul style="list-style-type: none"> 2.1 Commercial Timing Devices

- 3) Create a copy of the chosen skin's folder (the following example is based on the Lobby Blue theme) and rename it using the name you'd like to give to the new theme.



- 4) The folder should contain all the files required to build a WebWorks Help 5.0 theme.

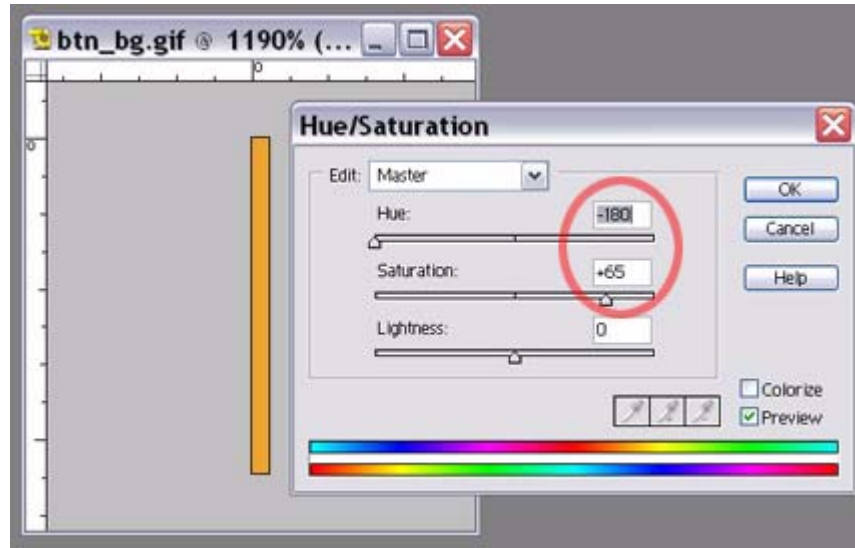
Modify the Theme's Images

Since the colors of all the tabs, buttons, and panels are determined by images, you'll have to adjust the color of those images to change the look of your theme. To accomplish this, you'll need a graphics editing application that allows you to adjust the **hue** of an image. For this example, we used Adobe Photoshop Elements 2.0; consult your application's documentation for more information.

Note: To change the look of the *text* in your layout, see "Customizing Tabs and Panels in WebWorks Help 5.0" on page 1.

- 1) Navigate to:
Skins\My_Theme\Files\wwhelp\wwhimpl\js\images
- 2) For each GIF image in the folder,
 - a) Open the file in your image editing software application.
 - b) Adjust the color (hue/saturation/lightness) as desired. For best results, change each setting by the same value for each image.

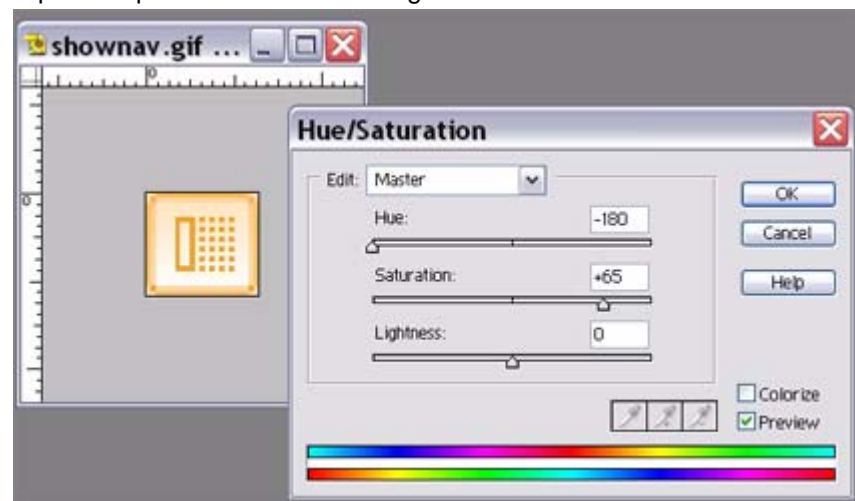
c) Save and close the GIF file



3) Navigate to:

\\Skins\\My_Theme\\Files\\wwhelp\\wwhimpl\\common\\images\\

4) Repeat Step 2 above for each image in the folder as desired.



Apply the Changes to Your Project

After creating the new theme and modifying the images to reflect the color scheme you'd like to use, you can integrate your custom theme into the settings of any WebWorks Help 5.0-based project.

1) Save and close your ePublisher Pro project.

2) Perform a Project Target Override on a file called **wwhelp_settings.fti**, located by default in the ePublisher Pro installation directory, here:

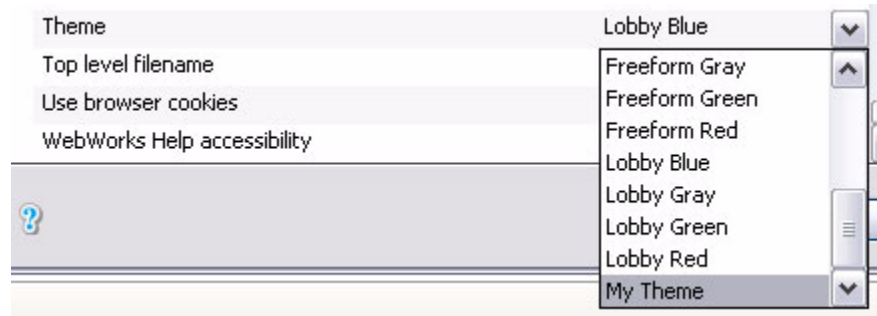
ePublisher Pro\\Formats\\WebWorks Help 5.0\\Transforms

Note: See "Creating Project Target Overrides" on page 1 for details on this procedure.

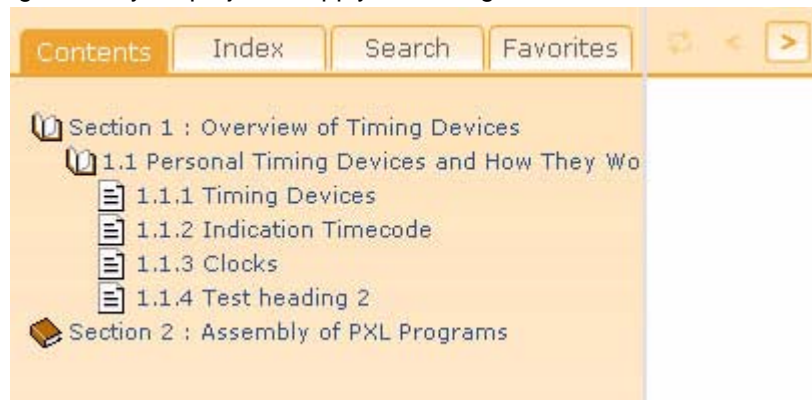
- 3) When **wwhelp_settings.fti** is copied correctly into your project directory, open it in a text editor, such as NotePad.
- 4) In the `<Class name="wwhelp-skin">` section, add a new item for the theme you have created. For example:

```
<Item value="My_Theme" stringid="wwhelp-theme-my-theme" />
```

- 5) Save and close **wwhelp_settings.fti**.
- 6) Open your project in ePublisher Pro.
- 7) Choose Project >> Format Settings.
- 8) Pull down the selection box for the "Theme" setting and choose your new theme.



- 9) Click OK to close the Format Settings dialog.
- 10) Regenerate your project to apply the changes.



To define text attributes (font, color, size, etc.) for your new theme, modify `wwhelp_settings.xml`, as describe in "Customizing Tabs and Panels in WebWorks Help 5.0" on page 1.

Customizing Tabs and Panels in WebWorks Help 5.0

External

Author: Ryan Hammett

Last Modified: October 12, 2006

ePublisher Pro

The purpose of this article is to explain how to modify the appearance of the tabs and panels in WebWorks Help 5.0

If you would like to change the font and colors for the tabs and panels in WebWorks Help 5.0, you will need to make changes in the **wwhelp_settings.xml** file. You will need to make sure you perform a project target override on this file before proceeding with this article. For more information on this procedure, please see “Creating Project Target Overrides”.

This article will walk you through the different settings you can modify to change the appearance of WebWorks Help 5.0 based on the settings in the **wwhelp_settings.xml** file.

Note: By default, the **wwhelp_settings.xml** file is in the directory C:\Program Files\WebWorks\ePublisher Pro\Formats\WebWorks Help 5.0\Skins\[SKIN NAME] where [SKIN NAME] is the name of the skin name you are using. The default skin name in WebWorks Help 5.0 is Lobby Blue.

Choose an element of the WebWorks Help 5.0 layout to modify:

- “Tabs Color Settings”
- “Tabs Font Settings”
- “Panels Default Settings”
- “Contents Panel Settings”
- “Index Panel Settings”
- “Search Panel Settings”
- “Favorites Panel Settings”
- “Custom Buttons & Background Colors”

Tabs Color Settings

To change the font color for the Contents, Index, Search and Favorites tab buttons, locate the default code below in the **wwhelp_settings.xml** file and

make modifications to the color values.

Tag	Attribute [value] - Description
DefaultColors	foreground [any valid color value] - Specifies the color of all non-selected tabs.
SelectedColors	foreground [any valid color value] - Specifies the color of tab that is selected by a user.

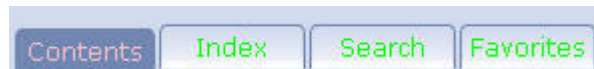
Default Code:

```
<Tabs>
  <DefaultColors foreground="#666666" />
  <SelectedColors foreground="#FFFFFF" />
</Tabs>
```

Modified Code Example:

```
<Tabs>
  <DefaultColors foreground="lime" />
  <SelectedColors foreground="pink" />
</Tabs>
```

Example Results:



Tabs Font Settings

To change the font type for the Contents, Index, Search and Favorites tab buttons, locate the default code below (beneath the <Implementations> tag) in the **wwhelp_settings.xml** file and make modifications using valid CSS font information.

Tag	Attribute [value] - Description
Font	style [any valid CSS font information] - Specifies the font type for tabs.

Default Code:

```
<Tabs>
  <!-- <Font> overrides can be specified here -->
  <Font style="font-family: Verdana, Arial, Helvetica, sans-serif ; font-size: 9pt ; font-weight: normal" />
</Tabs>
```

Modified Code Example:

```
<Tabs>
  <!-- <Font> overrides can be specified here -->
  <Font style="font-family: Verdana, Arial, Helvetica, sans-
serif ; font-size: 12pt ; font-weight: bold" />
</Tabs>
```

Example Results:



Panels Default Settings

You can specify the default settings for all the panels or modify them individually. To modify the default settings for all the panels, locate the default code below in the **wwhelp_settings.xml** file and make the appropriate modifications.

Tag	Attribute [value] - Description
Font	style [any valid CSS font information] - Specifies the default font type for all panels.
Indent	value [value in pixels] - Specifies the left text indent for all panels.
AnchorColors	highlight [any valid color value] - Specifies the background color of the selected link for all panels. enabled [any valid color value] - Specifies the link color for all panels. disabled [any valid color value] - Specifies the text color for all panels.

Default Code:

```
<Implementations>
  <JavaScript>
    <Font style="font-family: Verdana, Arial, Helvetica, sans-
serif ; font-size: 8pt" />
    <Indent value="17" />
    <AnchorColors highlight="#CCCCCC" enabled="#315585"
disabled="black" />
```

Modified Code Example:

```
<Implementations>
  <JavaScript>
```

```

<Font style="font-family: Verdana, Arial, Helvetica, sans-
serif ; font-size: 10pt; font-weight: bold;" />
<Indent value="20" />
<AnchorColors highlight="lime" enabled="red"
disabled="orange" />

```

Example Results:



Contents Panel Settings

To modify the Contents panel settings only, locate the default code below in the **wwhelp_settings.xml** file and make the appropriate modifications.

Tag	Attribute [value] - Description
Font	style [any valid CSS font information] - Specifies the font type for the Contents panel only.
Indent	value [value in pixels] - Specifies the left text indent for the Contents panel only.
AnchorColors	highlight [any valid color value] - Specifies the background color of the selected link for the Contents panel only. enabled [any valid color value] - Specifies the link color for the Contents panel only. disabled [none] - This option is not applicable in the Contents panel since there is no text and only links.

Default Code:

```

<Contents>

```

```

        <!-- <Font>, <Indent>, and <AnchorColors> overrides can be
specified here -->
    </Contents>

```

Modified Code Example:

```

<Contents>

    <Font style="font-family: Verdana, Arial, Helvetica, sans-
serif ; font-size: 10pt; font-weight: bold;" />

    <Indent value="25" />

    <AnchorColors highlight="lime" enabled="red"
disabled="orange" />

</Contents>

```

Example Results:



Note: The color orange does not appear in the output results because there are only hyperlinks in the TOC and there is not simple text, so the disabled attribute is not applicable in the Contents panel.

Index Panel Settings

To modify the Index panel settings only, locate the default code below in the wwhelp_settings.xml file and make the appropriate modifications.

Tag	Attribute [value] - Description
Font	style [any valid CSS font information] - Specifies the font type for the Index panel only.
Indent	value [value in pixels] - Specifies the left text indent for the Index panel only.

Tag	Attribute [value] - Description
AnchorColors	<p>highlight [any valid color value] - Specifies the background color of the selected link for the Index panel only.</p> <p>enabled [any valid color value] - Specifies the link color for the Index panel only.</p> <p>disabled [any valid color value] - Specifies the text color for the Index panel only.</p>
SectionNavigation	<p>threshold [any integer] - Specifies the number of index entries in the Index before the Index uses separate pages for each navigation link.</p> <p>separator [character separator] - Specifies the character that separates the Index navigation links.</p>
Font	<p>style [any valid CSS font information] - Specifies the font type for the Section Navigation area of the Index panel.</p>
CurrentColor	<p>value [any valid color value] - Specifies the color of the selected link letter in the Section Navigation area of the Index panel.</p>
AnchorColors	<p>highlight [none] - This option is not applicable in this section of the Index panel since there is the <code>CurrentColor</code> tag.</p> <p>enabled [any valid color value] - Specifies the navigation link color in the Section Navigation area of the Index panel.</p> <p>disabled [any valid color value] - Specifies the navigation text color in the Section Navigation area of the Index panel.</p>

Default Code:

```
<Index>

  <!-- <Font>, <Indent>, and <AnchorColors> overrides can be
specified here -->

  <SectionNavigation threshold="500" separator=" - ">
    <Font style="font-family: Verdana, Arial, Helvetica, sans-
serif ; font-size: 7pt ; font-weight: bold;" />
    <CurrentColor value="black" />
    <AnchorColors highlight="#CCCCCC" enabled="#315585"
disabled="#999999" />
  </SectionNavigation>
</Index>
```

Modified Code Example:

```
<Index>

  <Font style="font-family: Verdana, Arial, Helvetica, sans-
serif ; font-size: 10pt; font-weight: bold" />
  <Indent value="5" />
  <AnchorColors highlight="lime" enabled="red"
disabled="orange" />
  <SectionNavigation threshold="10" separator=" * ">
    <Font style="font-family: Verdana, Arial, Helvetica, sans-
serif ; font-size: 12pt ; font-weight: bold" />
    <CurrentColor value="aqua" />
    <AnchorColors highlight="pink" enabled="purple"
disabled="yellow" />
  </SectionNavigation>
</Index>
```

Example Results:



Note: The color pink for the attribute highlight does not appear in the output results. This option is not applicable in this section of the Index panel since there is the CurrentColor tag.

Search Panel Settings

To modify the Search panel settings only, locate the default code below in the wwhelp_settings.xml file and make the appropriate modifications

Tag	Attribute [value] - Description
Search	resultsbybook [true, false] - Specifies whether the search results displays the results by book.
Font	style [any valid CSS font information] - Specifies the font type for the Search panel only.
AnchorColors	highlight [any valid color value] - Specifies the background color of the selected link for the Search panel only. enabled [any valid color value] - Specifies the link color for the Search panel only. disabled [none] - This feature is not currently working.

Default Code:

```
<Search resultsbybook="true">  
  <!-- <Font> and <AnchorColors> overrides can be specified  
here -->  
</Search>
```

Modified Code Example:

```
<Search resultsbybook="false">  
  <Font style="font-family: Verdana, Arial, Helvetica, sans-  
serif ; font-size: 8pt" />  
  <AnchorColors highlight="lime" enabled="red"  
disabled="orange" />  
</Search>
```

Example Results:



Favorites Panel Settings

To modify the Favorites panel settings only, locate the default code below in the wwhelp_settings.xml file and make the appropriate modifications.

Tag	Attribute [value] - Description
Font	style [any valid CSS font information] - Specifies the font type for the Contents panel only.
AnchorColors	highlight [any valid color value] - Specifies the background color of the selected link for the Favorites panel only. enabled [any valid color value] - Specifies the link color for the Favorites panel only. disabled [none] - This option is not applicable in the Favorites panel since there is no text and only links.

Default Code:

```
<Favorites>
  <!-- <Font> and <AnchorColors> overrides can be specified
here -->
</Favorites>
```

Modified Code Example:

```
<Favorites>
  <Font style="font-family: Verdana, Arial, Helvetica, sans-
serif ; font-size: 8pt" />
  <AnchorColors highlight="lime" enabled="red"
disabled="orange" />
</Favorites>
```

Example Results:



Note: The `disabled` attribute is not applicable here because there are only hyperlinks and not simple text.

Custom Buttons & Background Colors

If the themes included with ePublisher Pro don't give you the look you want for your WebWorks Help 5.0 output, you can create a custom theme by modifying the color of the images used to build the format. See "Creating a Custom Theme for WebWorks Help 5.0".

Controlling the TOC with wwhelp_books.xml

External

Author: Adam Goldberg

Last Modified: June 26, 2006

ePublisher Pro

The purpose of this article is to explain the function of wwhelp_books.xml and how to modify it to achieve certain appearance effects.

This XSL file is called by the ePublisher Pro engine during a WebWorks Help 5.0 transform. It is instrumental in organizing the top-level groups in a project and it is responsible for creating the `books.xml` file that controls certain aspects of how the output for each group is displayed.

Editing wwhelp_books.xml

To build a Table of Contents, your output is organized into books based on the top-level groups specified in the Document Manager. `wwhelp_books.xml` uses settings defined by the user to name and display these books.

Note: Before you begin making changes outside the GUI, you must first perform a project format override on `wwhelp_books.xml`. For more information, see [Creating Project Target Overrides](#). The default location of `wwhelp_books.xml` is in the ePublisher Pro installation directory `\ePublisher Pro\Formats\WebWorks Help 5.0\Transforms\`

You can make the following changes to your output by editing `wwhelp_books.xml`. Click on each to view an explanation and a procedure.

- Define the Text in the browser title bar when your help system is first launched
- Specify whether a book is shown for the top-level group(s)
- Specify whether top-level books are expanded when your help system is launched

Define the Text in the browser title bar when your help system is first launched

By default, the text in the title bar is derived from the name of the top-level group for single-group projects, and from the "Merge Title" setting in the **Merge Settings** dialog box (Format>>Merge Settings) for projects with multiple top-level groups.

To change the title for a single-group project

You may specify browser title text for a project by changing the name of the top-level group in the **Document Manager**. You may also assign a unique title by making a change in `wwhelp_books.xml`. This is helpful if, for example, you want to use stationery to define the title text for multiple projects. Follow these steps to change the title text:

- 1) Open the copy of `wwhelp_books.xml` created with the project format override above.

- 2) Find the following line of code:

```
<wwhbooks:WebWorksHelpBooks version="5.0" name="{ $VarTitle }"
expandalltopentries="false" showbooks="false">
```

- 3) Replace the value { \$VarTitle } with your desired title text.

Example:

```
<wwhbooks:WebWorksHelpBooks version="5.0" name="New Title Text "
expandalltopentries="false" showbooks="false">
```

- 4) Save wwhelp_books.xml and Regenerate your output.

Result:



Text of browser window is replaced

To change the title for merged help (more than one group)

You may specify browser title text for a merged help project by changing the "Merged Title" setting in **Merge Settings**. If no title is specified by the user, the name of the project format will be used as the title (example: "WebWorks Help 5.0"). You may also assign a unique title by making a change in `wwhelp_books.xml`. This is helpful if, for example, you want to use stationery to define the title text for multiple projects. Follow these steps to change the title text:

- 1) Open the copy of `wwhelp_books.xml` created with the project format override above.
- 2) There are two ways to change the title text:
 - a) To change the title used if no value exists in **Merge Settings**:

- Find the following line of code:

```
<xsl:value-of select="wwproject:GetFormatName()" />
```

- Replace the value `wwproject:GetFormatName()` with your desired title text, surrounded by single quotes.

Example:

```
<xsl:value-of select="'My Merged Title'" />
```

a) To change the title and override any value in **Merge Settings**:

- Find the following line of code:

```
<wwhbooks:WebWorksHelpBooks version="5.0"  
name="{ $VarMergeTitle}" expandalltopentries="false"  
showbooks="true" >
```

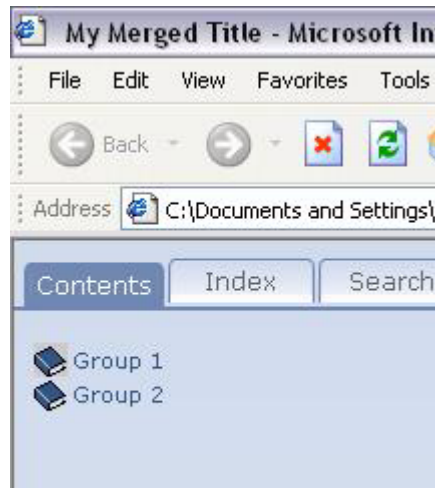
- Replace the value { \$VarMergeTitle} with your desired title text.

Example:

```
<wwhbooks:WebWorksHelpBooks version="5.0" name="My Merged  
Title" expandalltopentries="false" showbooks="true" >
```

2) Save `wwhelp_books.xml` and Regenerate your output.

Result:



Text of browser window is replaced.

Specify whether a book is shown for the top-level group(s)

For a project with only one top-level group, the book created for that group is hidden by default, and the contents of that group are displayed. A project with merged output will display a book for each top-level group by default. This setting can be toggled by editing `wwhelp_books.xml`.

To show a book for a single top-level group

You may wish to display a single book in the TOC of your help set. This can be helpful if you want to give your users a simple starting point from which to navigate.

- 1) Open the copy of `wwhelp_books.xml` created with the project format override above.
- 2) Find the following line of code:

```
<wwhbooks:WebWorksHelpBooks version="5.0" name="{ $VarTitle}"  
expandalltopentries="false" showbooks="false" >
```

- 3) Change the value of the attribute `showbooks` from `false` to `true`.
- 4) Save `wwhelp_books.xml` and Regenerate your output.

Result:



A book is shown for the single top-level group

To hide the top-level books in a merged help system

If you have several groups in the Document Manager, you may not want them to appear as separate books in the TOC of your output. This can be helpful if you use groups for organizational purposes only and want your output to flow together seamlessly.

- 1) Open the copy of `wwhelp_books.xml` created with the project format override above.
- 2) Find the following line of code:

```
<wwhbooks:WebWorksHelpBooks version="5.0" name="{ $VarMergeTitle }"
expandalltopentries="false" showbooks="true">
```
- 3) Change the value of the attribute `showbooks` from `true` to `false`.
- 4) Save `wwhelp_books.xml` and Regenerate your output.

Result:



The book for each top-level group is hidden

Specify whether top-level books are expanded when your help system is launched

By default, the TOC is collapsed, listing the table of contents level 1 as defined in the **Style Designer**.



TOC books are collapsed by default

It is possible to launch your help set with all the top-level books expanded by editing `wwhelp_books.xml`. This setting can be applied to projects with one or more groups, and it will only affect the uppermost books in the TOC hierarchy.

To expand all top entries in a single-group project

If an ePublisher Pro project has a single top-level group, then the book for that group is hidden and its contents become the top level of the TOC. If you wish to display this book, see *Specify whether a book is shown for the top-level group(s)*. Follow these steps to expand the top-level books that are displayed:

1) Open the copy of `wwhelp_books.xml` created with the project format override above.

2) Find the following line of code:

```
<wwhbooks:WebWorksHelpBooks version="5.0" name="{ $VarTitle }"
expandalltopentries="false" showbooks="false">
```

3) Change the value of the attribute `expandalltopentries` from `false` to `true`.

4) Save `wwhelp_books.xml` and Regenerate your output.

Result:



Top-level books are expanded upon launch

To expand all top entries in a merged help project

If an ePublisher Pro project has multiple top-level groups, then a book is shown for each one. If you wish to hide these books, see *Specify whether a book is shown for the top-level group(s)*. Follow these steps to expand the top-level books that are displayed:

- 1) Open the copy of `wwhelp_books.xml` created with the project format override above.
- 2) Find the following line of code:

```
<wwhbooks:WebWorksHelpBooks version="5.0" name="{ $VarMergeTitle }"
expandalltopentries="false" showbooks="true">
```

- 3) Change the value of the attribute `expandalltopentries` from `false` to `true`.
- 4) Save `wwhelp_books.xml` and Regenerate your output.

Result:



Top-level books are expanded upon launch

Summary

After performing a project format override, `wwhelp_books.xml` can be edited to produce several common changes to the default appearance of your WebWorks Help 5.0 output. These changes are summarized as follows:

For Single-Group Projects

Default Code	Edit	Effect
<pre><wwhbooks:WebWorksHelpBooks version="5.0" name="{VarTitle}" expandalltopentries="false" showbooks="false"></pre>	<pre>name="New Title Text"</pre>	Browser window title will be "New Title Text" when help system is launched
	<pre>expandalltopentries="true"</pre>	When help system is launched, top-level books in the TOC are expanded.
	<pre>showbooks="true"</pre>	Displays a book for the top-level group.

For Multiple-Group Projects

Default Code	Edit	Effect
<pre><wwhbooks:WebWorksHelpBooks version="5.0" name="{ \$VarMergeTitle }" expandalltopentries="false" showbooks="true" ></pre>	<code>name="My Merged Title"</code>	Browser window title will be "My Merged Title" when merged help system is launched
	<code>expandalltopentries="true"</code>	When merged help system is launched, top-level books in the TOC are expanded.
	<code>showbooks="false"</code>	Hides the top-level books in merged output.

A Guide to WebWorks Help 5.0 Search Settings

External

Author: Adam Goldberg.

Last Modified: October 26, 2006

ePublisher Pro

The purpose of this article is to explain the WebWorks Help 5.0 search engine and the user-defined settings for customizing search results.

We use a third-party search engine to compile and return search results in WebWorks Help 5.0 output. However, there are several markers you can add and XML files you can modify to get the search behavior you're looking for in your particular project.

How does it work?

The Search function of WebWorks Help 5.0 searches an index of words compiled from all topics in a book (or over several books in a merged help set). It assigns a value to each match according to where in the document the matching word or phrase is found. By default, the highest values are given to matches from keyword markers and main headings. Smaller values are assigned to lower-level headings and body text. After adding the match values for each document, it assigns rankings based on how each topic's score compares to the highest score returned.

Table 1: Default Search Weights

Keyword marker	100
Document description	50
Document summary	50
Document Title	20
Heading1	15
Heading2	10
Caption	10
Heading3	7
Table Heading	5
H4	4

Table 1: Default Search Weights

H5	4
H6	3
H7	2
All others	1

For example, a user searches for the string "media playback". The search returns the following matches for either "media" or "playback":

- TopicOne - 1 title, 2 heading1, 3 body, 2 heading3
- TopicTwo - 1 keyword, 3 heading1, 6 body
- TopicThree - 2 heading1, 3 heading3, 11 body, 1 caption

According to the default scoring weights, TopicOne would score 67 (20+ 30 + 3 + 14). TopicTwo would score 151 (100 + 45 + 6). TopicThree would score 72 (30 + 21 + 11 + 10). Therefore, the rankings (percentages of the highest score) would display to the user as:

1. TopicTwo - 100%
2. TopicThree - 48%
3. TopicOne - 44%

That's the basic principal behind the search logic. You can configure the behavior of the search function (including adding or adjusting score values) by performing a format or target override on a file located in the ePublisher Pro installation directory here:

Formats\WebWorks Help 5.0\Transforms\wwhelp_files.xml

That file also contains some more notes and information on the variables you can change to achieve the desired results.

Also, you can add increased functionality to your searches by defining search synonyms, which will score matches when a similar word or phrase is encountered.

Note:For information on performing project target overrides, please see Creating Project Target Overrides.

Keyword Markers

You can increase the search score of a particular article by inserting markers containing the most relevant search terms for that topic. This will ensure that when a user searches for a particular word, your designated topic will appear higher in the list of results. Follow these steps:

- 1) In your FrameMaker document, create a new marker called "Keyword."
- 2) Insert a new Keyword marker anywhere in your topic.
- 3) Add keywords to the marker text that will have the most relevance to the particular article in a text search. Separate terms with a comma.
- 4) Insert the marker and save your document.
- 5) In your ePublisher Pro project, scan the document(s).
- 6) In the Style Designer, ensure the Marker type value for the Keyword marker is set to "Keywords."

7) Regenerate output to apply the changes.

Synonyms

By defining a list of synonyms, you can increase the effectiveness of a search by grouping similar words together as a single result. For example, you define *movie*, *video*, and *avi* as synonyms. If a user searches for one of those terms, a match will be scored if any of the three are found in a document.

To add these definitions, you'll need to perform an override on a file called **synonyms.xml**, located by default in the ePublisher Pro installation directory here:

```
Formats\WebWorks Help 5.0\Files\wwhdata\common\
```

Once the file is copied to the correct location in your project directory, open it in any text- or XML-editing application (e.g., NotePad), and add entries to the `<WebWorksSynonyms>` section. For example, your synonyms might look like this:

```
<WebWorksSynonyms>
  <Word value="movie">
    <Synonym value="avi" />
    <Synonym value="video" />
  </Word>
  <Word value="picture">
    <Synonym value="image" />
    <Synonym value="graphic" />
    <Synonym value="photo" />
  </Word>
</WebWorksSynonyms>
```

Note: The Synonyms feature does not recognize multiple word values or synonyms. And, it ignores words (and synonyms) of 2 letters or less. Also, its search logic is quite literal. That is, it finds only what you type, and only if the exact form is in the text. For example, it does not find plurals or phrases, and it even includes punctuation.

Minimum word length & common words

When performing a text search, the WebWorks Help 5.0 search engine follows a couple of guidelines designed to make the search more efficient and the results more helpful. By default, the minimum length of a word in the search results is 3 letters. ePublisher Pro also comes with a list of terms which appear commonly in many types of documents, and are therefore left out of search results. You can modify both the minimum length and the list of common words by performing a target override on a file called **locales.xml**, located by default in the ePublisher Pro installation directory, here:

```
Formats\Shared\common\locale
```

Note: For tips on performing the override, see [Creating Project Target Overrides](#).

Note: Because this file is in the Shared formats directory, your project folder hierarchy should look like this:

MyProject\Targets\MyWWHelpTarget\Shared\common\locale

Minimum length

To change the minimum number of letters in a WebWorks Help 5.0 search result:

- 1) Open **locales.xml** in an XML- or text-editing application (e.g., NotePad).
- 2) Find the Locale used by your project (default English is “en”).
- 3) Under the <Search> section, change the `MinimumWordLength` value to the desired number of characters in the shortest word the search should return.

Common words to skip

To change the list of words which will not be returned in a WebWorks Help 5.0 search:

- 1) Open **locales.xml** in an XML- or text-editing application (e.g., NotePad).
- 2) Find the Locale used by your project (default English is “en”).
- 3) Under the <Search> section, modify the <StopWords> values to reflect the list of words which should not appear in your project’s search results.

Calling WebWorks Help 5.0 Context-Sensitive Help

External

Author: Osman Tavilson

Last Modified: February 6, 2007

ePublisher Pro

This article describes the most recent API module for the WebWorks Help 5.0 output format.

Background

Software applications can call a context-sensitive WebWorks Help topic either by using a standard URL or by using the WebWorks Help API. Using the API instead of simple URLs gives the developer increased flexibility and enhanced control. Benefits of using the API include the following:

- The API automatically determines the user's default browser and opens it to display the correct Help topic.
- The API reduces the amount of code software developers must write in order to integrate context-sensitive Help. Without the API, developers must code their own COM interface to communicate with Internet Explorer on the Windows platform. Full source code is provided as part of the WebWorks Help API.
- Using the API can significantly reduce the time required to load an individual topic if the Help system is already open in the browser window. If your application calls a topic using a URL instead of the API, the entire frameset, including the WebWorks Help applet, is loaded each time the user invokes Help. If the application calls a topic using the API, and the correct helpset is already loaded in the browser window, neither the frameset nor the applet is reloaded; instead, the topic frame is used to display the correct Help topic. This results in a significant performance improvement for users of your WebWorks Help system.
- It is now possible to call the API from .NET, and we include examples to do so from C# and Visual Basic. Features in this API package include a DLL and COM object for the Windows platform, examples and projects to build them, as well as documentation.

Note: The most recent release of the WebWorks Help API is version 4.0.5 (09/02/2004). It is compatible with the WebWorks Help 4.0 format and later. However, WebWorks Help 5.0 does not support Java navigation, so these options should not be implemented. For more information, see

WebWorks Help using URLs

You can call a WebWorks Help system using a standard http: or file: URL. By varying the syntax of the URL, you can call the overall Help system, an individual topic, or the accessible version of the Help.

To open a WebWorks Help system, you normally call a particular URL. For example, you might open a WebWorks Help system from a Web server by calling the following

URL:

```
http://www.webworks.com/wwp2003/index.htm
```

If the WebWorks Help system were stored in the user's local file system, you would use a file: URL like this:

```
file:///C:/Program Files/YourApplication/Help/index.htm
```

Either of these URLs would open the WebWorks Help system, displaying the splash screen in the topic frame.

Opening an individual topic in the frameset view

To open a specific topic, you would call a URL like this:

```
http://www.webworks.com/wwp2003/  
index.htm?context=user_guide&topic=project_launcher
```

In this URL, the context value (`user_guide`) is the top-level group defined and uniquely identifies a particular Help system, and the topic ID (`project_launcher`) uniquely identifies a particular topic within the Help system. This URL would open the WebWorks Help system, displaying the appropriate topic in the topic frame.

By adding a value to the URL, you can display a context-sensitive Help topic without the WebWorks Help navigation frame also being displayed. For example:

```
http://www.webworks.com/wwp2003/  
index.htm?context=user_guide&topic=project_launcher&single=true
```

By including `single=true`, you instruct WebWorks Help to display the topic in topic only view.

Calling WebWorks Help using the WebWorks Help API

WebWorks Help also incorporates an API that software developers can use to call context-sensitive topics in a WebWorks Help system. Using the API instead of simple URLs gives the developer increased flexibility and enhanced control. Benefits of using the API include the following:

- The API automatically determines the user's default browser and opens it to display the correct Help topic.
- The API reduces the amount of code software developers must write in order to integrate context-sensitive Help. Without the API, developers must code their own COM interface to communicate with Internet Explorer on the Windows platform. This code is provided as part of the WebWorks Help API.
- Using the API can significantly reduce the time required to load an individual topic if the Help system is already open in the browser window. If your application calls a topic using a URL instead of the API, the entire frameset, including the WebWorks Help applet, is loaded each time the user invokes Help. If the application calls a topic using the API, and the correct helpset is already loaded in the browser window, neither the frameset nor the

applet is reloaded; instead, the topic frame is used to display the correct Help topic. This results in a significant performance improvement for users of your WebWorks Help system.

The WebWorks Help API is a C/C++ API and can be used with applications written in C, C++, Visual Basic, and Java.

Note: We have not yet updated the API for WebWorks Help 5.0. However, the WebWorks Help 4.0 API can be used. Just be sure not to use any of the Java navigation options, as WebWorks Help 5.0 does not include the Java navigation.

API package 4.0.6 available for download

Version 4.0.5 introduced an API for Javascript to this package. The API for Javascript is made available for use of WebWorks Help with web applications. The API for Javascript includes a Javascript source file, an example and documentation.

Version 4.0.6 (December 2006) includes a minor update to work around Internet Explorer 7.0's security settings which strip the query string from local URLs. This "bug" prevents previous versions of the API from passing context and topic arguments to the WebWorks Help 5.0 output, resulting in the main entry-point file (index.html) being displayed instead of the requested topic page.

The WebWorks Help 4.0.6 API is available for download from our online Wiki:

<http://wiki.webworks.com/DevCenter/Projects/WebWorksHelp/WebWorksHelpAPI>

The WebWorks API is written in ANSI compliant C for portability. It is intended to be no more than a starting point for developers implementing context-sensitive help into their applications, and we cannot offer support or documentation other than that provided here, in the Wiki article, and in the API download package.

Customizing WebWorks Help 5.0

External

Author: Geneva Sampson

Last Modified: March 27, 2006

ePublisher Pro

The purpose of this article is to provide you with a resource for customizing your WebWorks Help output.

The online WebWorks ePublisher Pro online Help does not currently have any information on customizing output formats. In order to address that issue, we have created a PDF that will provide users with more information on WebWorks Help 5.0. To access this PDF, please [click here](#).

Disabling TOC scroll bar

External

Author: Osman Tavilson

Last Modified: July 6, 2006

ePublisher Pro

The purpose of this article is to explain how to disable the scroll bar at the bottom of the TOC pane.

Some project modifications cannot be made through the GUI so we have created this article to provide steps for modifying the navigate.htm file using project target overrides. When you create a project target override you are only overriding the specific file that you want to modify; you are also ensuring that these modifications are not lost when installing updates to ePublisher Pro. For more information on how to perform a project target override, please see ““Creating Project Target Overrides””.

Updating Navigate.htm:

- 1) Open navigate.htm file in any text editor.
- 2) Find the frameset below </head> section.
- 3) In “<frame name="" src="../../common/html/blank.htm" scrolling="auto" frameborder="0">” change the word “auto” to “no”.
- 4) Save the navigate.htm file.
- 5) Close navigate.htm.
- 6) Open ePublisher Pro.
- 7) Generate your project.