

Replacing the WebWorks Help 5.0 Splash Screen

External

Author: Adam Goldberg

Last Modified: January 31, 2007

ePublisher Pro

This article describes the instructions for replacing the Splash Screen for your WebWorks Help 5.0 project output.

The information in this article is specific to ePublisher Pro, version 9.2.2 build 10315. Version 9.2.2 makes it easier than ever to change your splash image, modify the splash page, or skip the splash page altogether.

Replacing the Splash image

Modifying the Splash Page

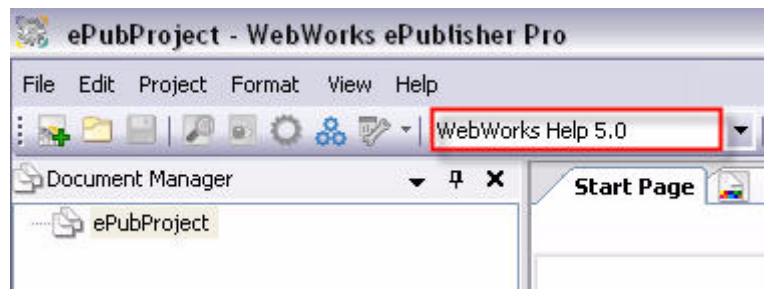
Disabling the Splash Page

Replacing the Splash image

To replace just the image on the splash page for the WebWorks Help 5.0 format, you will need to override the default `splash.jpg` image by creating a project target override. Please read the KB article [Creating Project Target Overrides](#) for general instructions on creating a project target override.

For replacing the Splash image specifically, please follow these instructions:

- 1) In ePublisher Pro, choose **View > User Files**, and navigate up one level to the same directory where your `.wep` ePublisher Pro project file is located.
- 2) Create a new folder called **Targets**.
- 3) In the **Targets** folder, create a folder with the same name as the **Format Target** you are using in your project. To view the name of the format target you are currently using look at the drop-down field in the toolbar of the main WebWorks ePublisher Pro window.



The default target name for an ePublisher project based on the **WebWorks Help 5.0** format will be **WebWorks Help 5.0**.

- 4) In the next step, you will need to recreate the directory structure in the folder you created in Step 3 to mirror the following directory structure that leads to the **splash.jpg** in the directory where you installed ePublisher Pro.

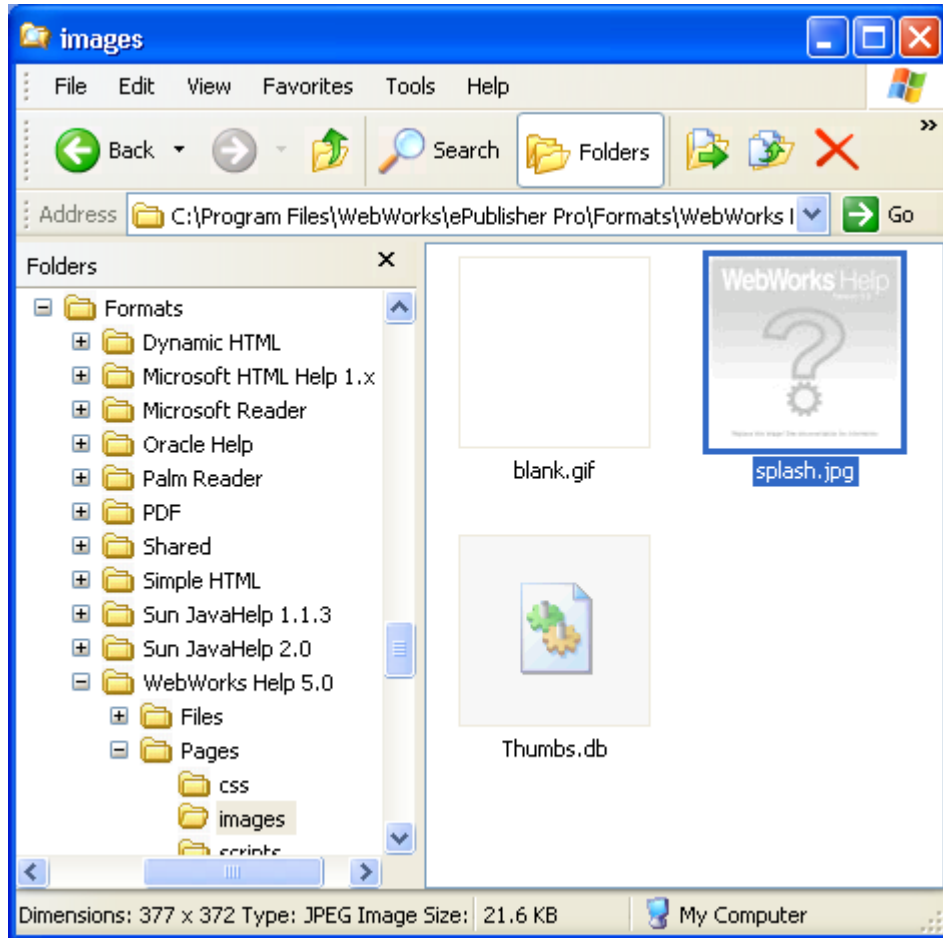


Figure 1 For the default **WebWorks Help 5.0** format, the portion of the hierarchy you will be recreating in the screenshot above will be: `WebWorks Help 5.0\Pages\images\`.

- 5) Create the directory structure above inside the **Targets** or **Formats** directory (that you created in Step 3), which is located in your ePublisher project directory.
- 6) Copy your splash image into the new *images* directory, and rename it **splash.jpg**.
- 7) Regenerate your project's output to apply the changes. The new splash page will appear when you launch the entry-point file (i.e., `index.htm`) in your output.
- 8) The next time you save your ePublisher Pro project as **Stationery**, the splash page will be saved in your stationery for creating future projects based on your custom Stationery.

Modifying the Splash Page

Many users prefer to add text or other content to the initial splash page, and this kind of customization requires only a simple override. You'll want to perform this override

on the **Splash.asp** file, located by default here:

```
ePublisher Pro\Formats\WebWorks Help 5.0\Pages\Splash.asp
```

This is the general HTML page template used to build the initial splash page in your output.

- 1) After you have copied the file to the appropriate location within your project folder, open it in any text editor, such as NotePad.
- 2) Near the bottom, you'll see the main content of the file, which looks like this:

```
<div wwpage:condition="wwhelp-show-splash-page">
  <p align="center">
    
  </p>
</div>
```

Using standard HTML, CSS, or other web development syntax, add or modify any code between the two `div` tags to get the look you want from your splash page.

- 3) Save and close **Splash.asp**.
- 4) Regenerate your output to apply the changes.

Disabling the Splash Page

If you would rather disable the splash page completely and force your help system to display the first topic page instead, the procedure is even more simple:

- 1) In your ePublisher Pro project, open the **Format Settings** dialog.
- 2) Near the bottom, in the **WebWorks Help** section, set the value for the **Show first document instead of splash page** setting to *Enabled*.
- 3) Click *OK* to close the **Format Settings**.
- 4) Regenerate your output.